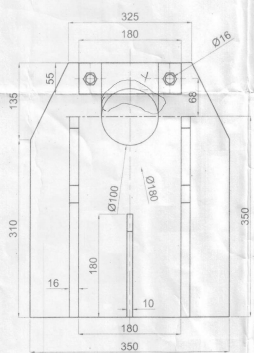
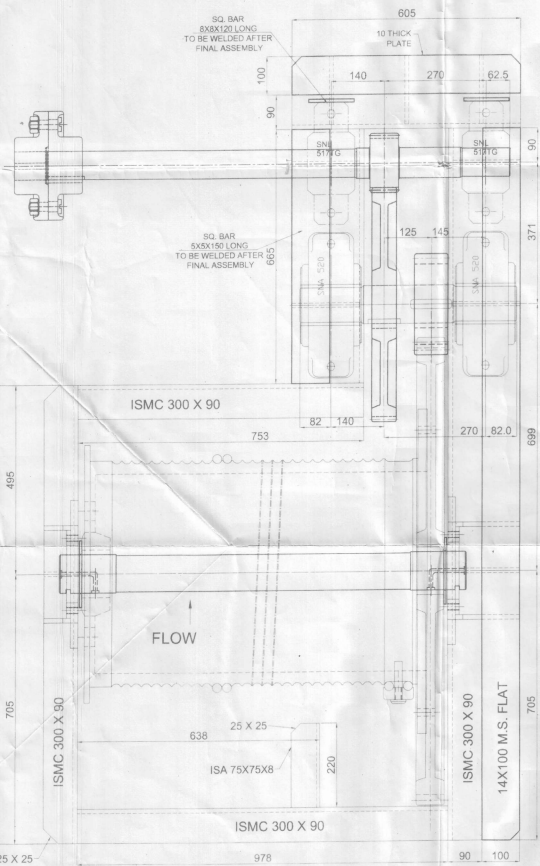


WIRE ROPE :- Ø24 WIRE ROPE, 6X36 CONSTRUCTION RIGHT HAND LAY GALVANISED, MAIN FIBER CORE, GRADE 1770CF, BREAKING LOAD CAPACITY 336 KN, WEIGHT PER MTR 2.19 KG, LENGTH 130 M SINGLE PIECE (CONFIRMING TO IS 2266:2002)

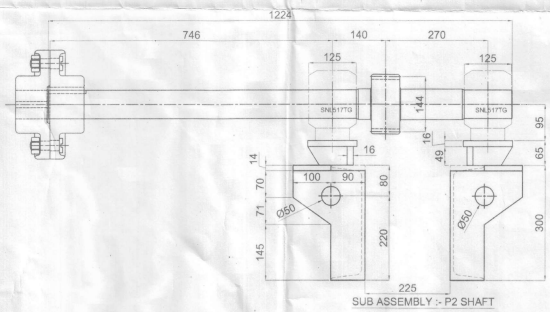
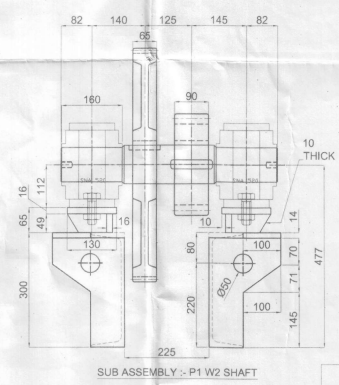
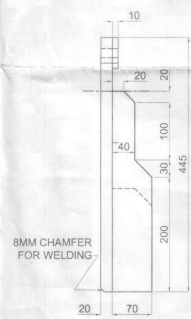
PLUMMER BLOCK (SHAFT DIA. 90mm AT Brg.) PL. BLOCK SNL 520 TA + 22220 EK + H320, CAPACITIES:-STATIC=490KN DYNAMIC=433KN (MAKE:-SKF OR EQUIVALENT)

PLUMMER BLOCK (SHAFT DIA. 75mm AT Brg.) PL. BLOCK SNL 517 TA + 22217 EK + H317, CAPACITIES:-STATIC=325KN DYNAMIC=291KN (MAKE:-SKF OR EQUIVALENT)

- NOTE:
1. ALL DIMENSIONS ARE IN MM.
 2. ALL WELDS ARE 8MM FILLET CONTINUOUS UNLESS OTHERWISE STATED.
 3. DRUM BRACKET WELD SIZE=14 MM FILLET WELD
 4. L.H. GEAR TRAIN FRAME SHOWN & R.H. OPPOSITE.
 5. PROVIDE SUITABLE COVER WITH SOLID BASE.
 6. DIMENSIONS SHOULD NOT BE SCALED OUT FROM DRG.



DRUM BRACKET
MAT. :- M.S (IS 2062)
QTY. :- 4 NO.S / HOIST



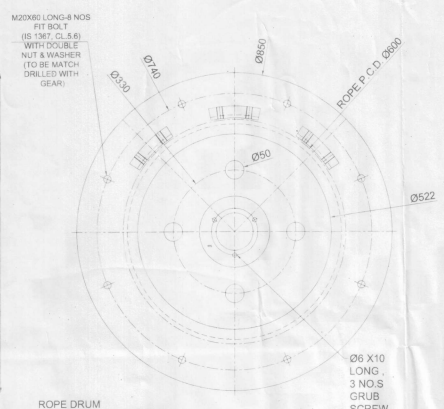
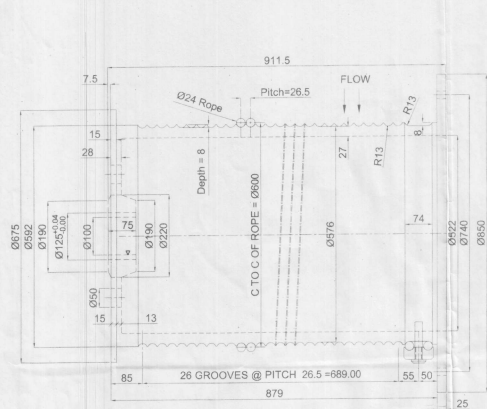
GOVERNMENT OF MAHARASHTRA
WATER RESOURCES DEPARTMENT
MECHANICAL ORGANISATION

CHIEF ENGINEER (MECH), NASHIK, 422 002
MECHANICAL CIRCLE, PUNE, 411 001
GATE MFG DIVISION 'A' DAPODI, PUNE, 411 012

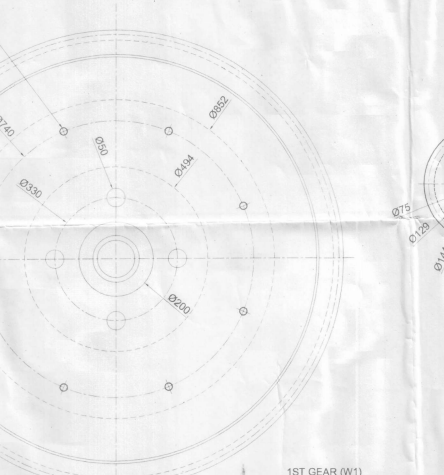
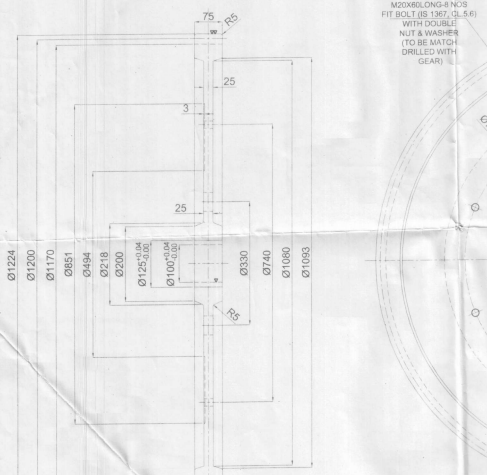
REGUNTHA
LIFT IRRIGATION SCHEME
TAL : SIRONCHA DIST : GADCHIROLI

ASSEMBLY OF GEAR TRAIN FRAME
FOR 18T CAP. ROPE DRUM HOIST OF E.G. FOR GATED INTAKE STRUCTURE

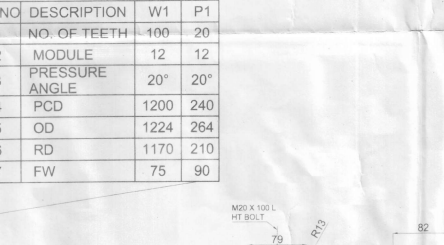
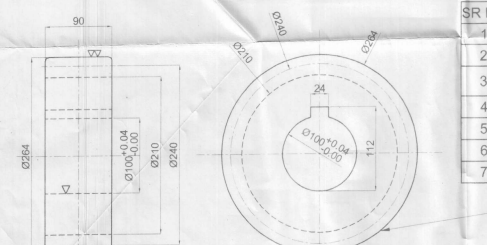
 (S.V. KHANDARE AE-II) -DESIGN & DRG BY-	 (M.M. PATIL) DY. ENGR. H.D. SUB.DN.	 (R.H. CHAVAN) SUPERINTENDING ENGINEER MECHANICAL CIRCLE, PUNE-1.
 (D.S. PATIL-SECT ENGR) -CHECKED BY-	 (P.P. ABHAYVEER) EXECUTIVE ENGINEER G.M.D.A. DAPODI, PUNE-12	
FILE NO.- 715	DATE: 21/08/2025	DRG. NO.- 3413
		REV-0



ROPE DRUM
MAT.: C.S (IS 1030) GR. 340-570W
QTY:- 2 NO.S / HOIST (L.H. & R.H.)

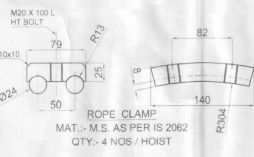


ROPE DRUM
MAT.: C.S (IS 1030) GR. 340-570W
QTY:- 2 NO.S / HOIST (L.H. & R.H.)

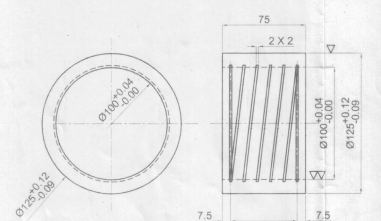


ROPE DRUM
MAT.: C.S (IS 1030) GR. 340-570W
QTY:- 2 NO.S / HOIST (L.H. & R.H.)

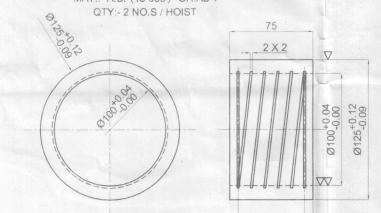
SR NO	DESCRIPTION	W1	P1
1	NO. OF TEETH	100	20
2	MODULE	12	12
3	PRESSURE ANGLE	20°	20°
4	PCD	1200	240
5	OD	1224	264
6	RD	1170	210
7	FW	75	90



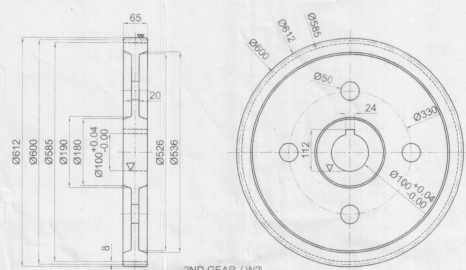
ROPE CLAMP
MAT.: M.S. AS PER IS 2062
QTY:- 4 NOS / HOIST



DRUM BUSH
MAT.: A.B. (IS 305) GRAB 1
QTY:- 2 NO.S / HOIST

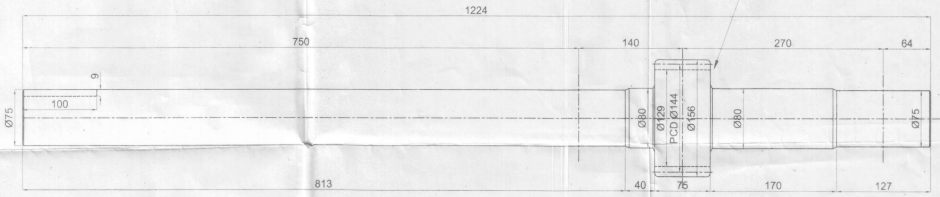


GEAR BUSH
MAT.: A.B. (IS 305) GRAB 1
QTY:- 2 NO.S / HOIST

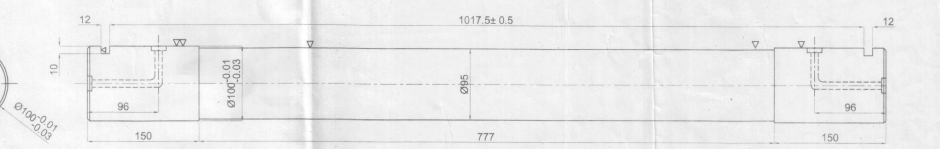


2ND GEAR (W2)
MAT.: C.S (IS 1030) GR. 340-570
QTY:- 2 NO.S / HOIST

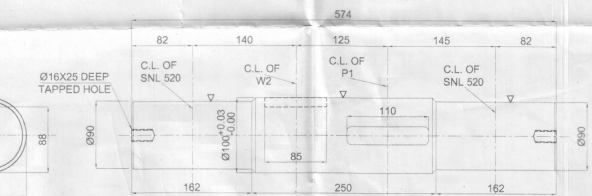
SR NO	DESCRIPTION	W2	P2
1	NO. OF TEETH	100	24
2	MODULE	6	6
3	PRESSURE ANGLE	20°	20°
4	PCD	600	144
5	OD	612	156
6	RD	585	129
7	FW	65	75



2ND PINION SHAFT
MAT.: 55C8 (IS 2004)
QTY:- 2 NO.S / HOIST
(TO BE MANUFACTURED FROM SINGLE SOLID ROUND)



DRUM AXLE
MAT.: 45C8 (IS 2004)
QTY:- 2 NO.S / HOIST



1ST PINION SHAFT
MAT.: 45C8 (IS 2004)
UTS=620MPa, Y.P.320MPa
QTY:- 2 NO.S / HOIST

GOVERNMENT OF MAHARASHTRA
WATER RESOURCES DEPARTMENT
MECHANICAL ORGANISATION

CHIEF ENGINEER (MECH), NASHIK, 422 002
MECHANICAL CIRCLE, PUNE 411 001
GATE MFG DIVISION 'A' DAPODI, PUNE, 411 012

REGUNTHA
LIFT IRRIGATION SCHEME
TAL : SIRONCHA DIST : GADCHIROLI

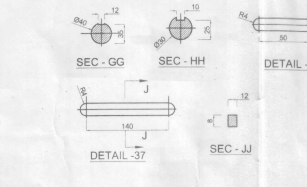
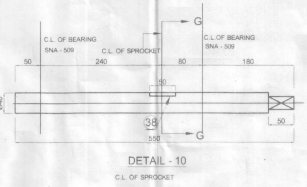
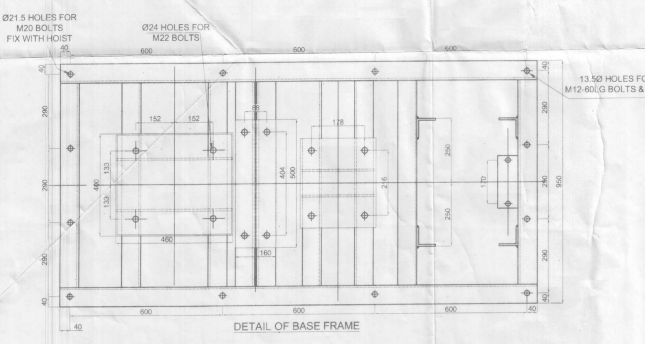
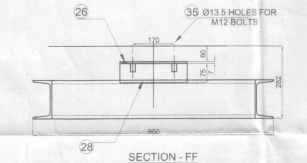
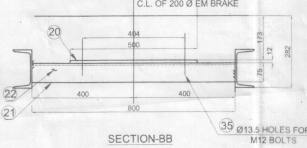
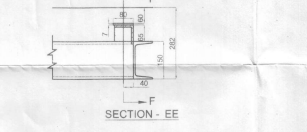
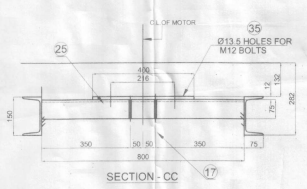
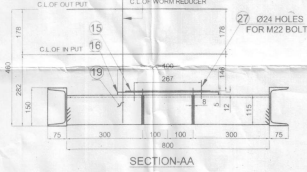
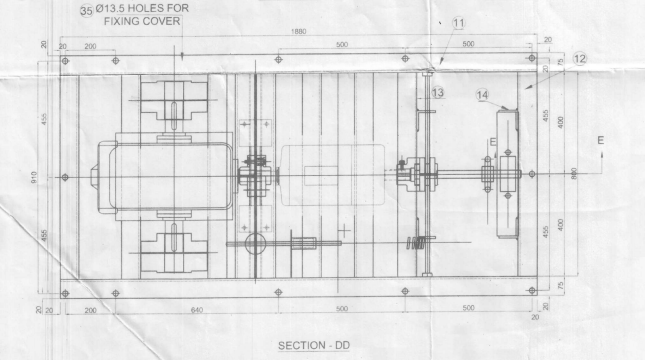
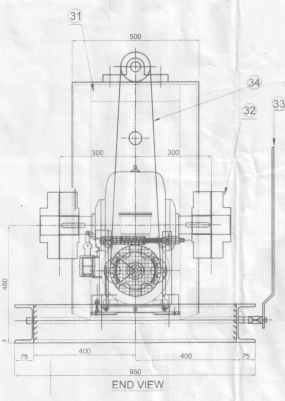
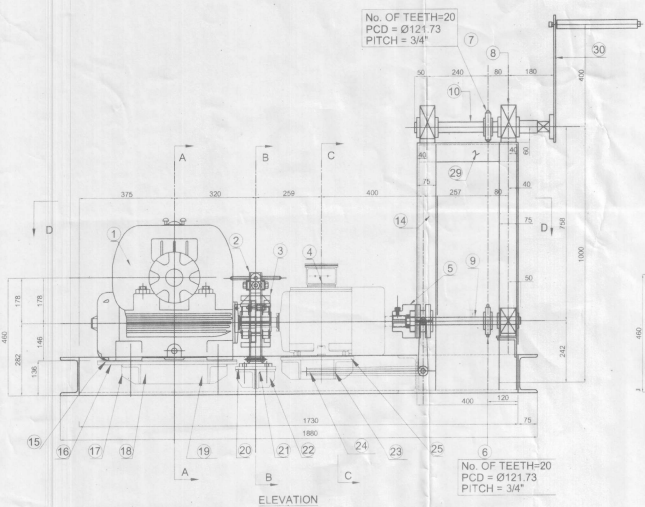
DETAILS OF ROPE DRUM DRUM BUSH, W1-P1, W1-BUSH
W2-P2 & PINION SHAFTS FOR 1ST CAP. ROPE DRUM HOIST
OF E.G. FOR GATED INTAKE STRUCTURE

Handwritten signatures and stamps of engineers and supervisors.

*Dog (check Assy)
Roller not provided.
Spring tabs -
Chain for sprockets into*

- NOTE:**
1. ALL DIMENSIONS ARE IN MM.
 2. ALL WELDS ARE 6MM FILLET CONTINUOUS UNLESS OTHERWISE STATED.
 3. CHECK THE DIMENSIONS OF BOUGHT OUT ITEMS BEFORE TAKING UP THE FABRICATION.
 4. PROVIDE END STOPPERS TO ALL BOUGHT OUT ITEMS AFTER TRIAL TEST IN THE SHOP.
 5. B.O.Q GIVEN FOR 1 NO.

- 1) MOTOR:**
 (5.5KW) 7.5 HP 940RPM SQUIREL CAGE INDUCTION MOTOR, CRANE DUTY S4, TEFC, FOOT MOUNTED CLASS"FF" INSULATION WORKING ON 400 / 440V A.C 3PHASE 50CYC/SEC CONFORMING TO IS 325 SHAFT EXTENSION ON BOTH SIDES, FRAME SIZE ND-132M - 1 No.
 MAKE : CROMPTON GREEVES or EQT.
- 2) EM BRAKE:**
 Ø200 AC ELECTRO MAGNETIC SINGLE PHSE BRAKE 100% COIL RATING, CLASS"B" INSULATION, WORKING ON 400/440V A.C. 50 C/S WITH BRAKING TORQUE CAP 13 KGM-1No.
 MAKE : PETHE or EQT.
- 3) WORM REDUCER:**
 RATIO 60:1, SIZE U-700 INPUT 7.38 KW, INPUT SPEED 1000 RPM OUTPUT TORQUE 3120 NM OUTPUT SHAFT EXTENSION ON EITHER SIDE WITH SELF LOCKING - 1No.
 MAKE : PREMIUM or Equivalent



PART No	DESCRIPTION	NOS REQD	MATL
38	KEY 10X8 - 50 LONG	1	40 C 8
37	KEY 8X7 - 140 LONG	1	40 C 8
36	KEY 8x7 - 50 LONG	2	40 C 8
35	HEX BOLT M12x60 LONG NUT & WASHER	18	IS 1367
34	3/4" PITCH SIMPLE CHAIN	1	--
33	STD HANDLE C/S	1	IS:2062
32	FLANGE COUPLING Ø 75	2	IS:1030
31	L75x75x8 - 484 LONG	2	IS:2062
30	HANDLE FOR MANUAL OPERATION (SUITABLE)	1	--
29	L75x75x8 - 400 LONG C/S	2	IS:2062
28	L75x75x8 - 265 LONG	1	IS:2062
27	HEX BOLT M22x85 LONG NUT & WASHER	16	IS:1367
26	SHIM 80x6.8 - 265 LONG	1	IS:2062
25	PL-350X10 - 350 LONG	1	IS:2062
24	PL-70X10-137 LONG	2	IS:2062
23	L75x75x8 - 800 LONG	2	IS:2062
22	PL-70x8 - 70 LONG C/S	4	IS:2062
21	L75x75x8 - 800 LONG C/S	2	IS:2062
20	PL 160X10-500 LONG	1	IS:2062
19	L75x75x8 - 800 LONG	2	IS:2062
18	PL-70X10-263 LONG C/S	2	IS:2062
17	PL- 70X10X70 LONG C/S	8	IS:2062
16	PL-480x12- 400 LONG	1	IS:2062
15	SHIM 520x4.5 - 350 LONG	1	IS:2062
14	L75x75x8 - 940 LONG	4	IS:2062
13	ISMC - 150x75 - 800 LONG	1	IS:2062
12	ISMC - 150x75 - 800 LONG	2	IS:2062
11	ISMC - 150x75 - 1880 LONG	2	IS:2062
10	400 ROUND I/MC (AS NOTE) - 650 LONG	1	40 C 8
9	400 ROUND I/Mc 324 LONG	1	40 C 8
8	PLUMMER BLOCK SNA 509 WITH BEARING 1209+ SLEEVE H- 209	3	SKF/NTH NSK/SIBCO
7	SPROCKET SP2	1	AS NOTED
6	SPROCKET SP1	1	AS NOTED
5	Ø45 DOG CLUTCH	1	AS NOTED
4	MOTOR	1	AS NOTED
3	Ø200 BREAK DRUM COUPLING	1	IS:1030
2	Ø200 E.M - BREAK	1	AS NOTED
1	WORM REDUCER	1	AS NOTED
PART No	DESCRIPTION	NOS REQD	MATL

**GOVERNMENT OF MAHARASHTRA
 WATER RESOURCES DEPARTMENT
 MECHANICAL ORGANISATION**

CHIEF ENGINEER (MECH), NASHIK, 422 002
 MECHANICAL CIRCLE, PUNE, 411 001
 GATE MFG DIVISION 'A' DAPODI, PUNE, 411 012

REGUNTHA
 LIFT IRRIGATION SCHEME
 TAL : SIRONCHA DIST : GADCHIROLI

DETAILS OF HOIST DRIVE UNIT
 FOR 18T CAP. ROPE DRUM HOIST OF E.G. FOR GATED INTAKE STRUCTURE

(S.V. KHANDARE AE-II) - DESIGN & DRG BY:-
 (M.D. PATIL) BY ENGR. H.D. SUB DIN

(D.S. PATIL - SECT ENGR) - CHECKED BY:-
 (P. P. SHAWAREE) EXECUTIVE ENGINEER
 G.M.D.A. DAPODI, PUNE-12

(R.H. CHAVAN) SUPERINTENDING ENGINEER
 MECHANICAL CIRCLE, PUNE-1

FILE NO - 715 DATE 21/08/2025 DRG. NO - 34/6/2025 REV-0