

GOVERNMENT OF MADHYA PRADESH

TRIBAL AFFAIR DEPARTMENT

OFFICE OF THE ASSISTANT COMMISSIONER TRIBAL AFFAIR DEPARTMENT ANUPPUR (M.P)



DPR NAME- Minor Original of Work Roof Treatment, Patch Plaster ,Providing and fixing Door and Window, White cement base Putty, Finishing walls with Acrylic Exterior Emulsion, Painting, PCC of Flooring, Providing and Laying of Tiles And Electricity work at Senior Boys Hostel (Tribal) Gadhi dadar , Distt. Anuppur(M.P.)

PROBABLE AMOUNT -

14.49 Lac

**ASSISTANT COMMISSIONER
TRIBAL AFFAIR DEPARTMENT
ANUPPUR (M.P.)**

TECHNICAL REPORT

NAME OF WORK

Minor Original of Work Roof Treatment, Patch Plaster, Providing and fixing Door and Window, White cement base Putty, Finishing walls with Acrylic Exterior Emulsion, Painting, PCC of Flooring, Providing and Laying of Tiles And Electricity work at Senior Boys Hostel (Tribal) Gadhi dadar, Dist. Anuppur (M.P.)

1. PAC

RS 14.49Lac

2. AUTHORITY

Assistant Commissioner Tribal Affairs Department
Anuppur (M.P.)

3. NECESSITY

Require of Education facility

4. PROVISION

Following Provision are made in the Estimate -

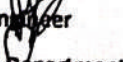
1. Demolishing cement concrete for roof treatment
2. Grading for Roof treatment work with CC 1:2:4 & Fiber glass cloth
3. Water Proofing Treatment with the use of cement slurry, Water proofing compound Fiber Glass cloth and sand in 3 layers.
4. Repairing of ceiling and Wall Plaster
5. Providing and Laying cement Putty, Painting with interior and Exterior emulsion Paint.
6. Repairing/Replacing Door, window shutters.
7. Painting Steel and wood work with Deluxe Multi surface paint.
8. Demolishing of existing damaged cement concrete floor.
9. Providing and laying CC M15 beneath Vitrified tile flooring.
10. Providing and laying Vitrified tiles in Flooring and Skirting.
11. Electrification Work

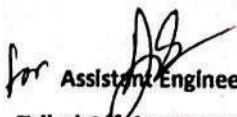
5. Specification

The work shall be done as per norms and standard laid down in MP PWD specification for similar work in practice.

6. RATE

Rates are adopted as per SOR for Building Work in force from 01 January 2024 issue by MP PWD (PIU) Bhopal.


Sub Engineer
Tribal Affairs Department
Anuppur (M.P.)


Assistant Engineer
Tribal Affairs Department
Shahdol (M.P.)

GENERAL ABSTRACT

Name of Work - Minor Original of Work Roof Treatment, Patch Plaster, Providing and fixing Door and Window, White cement base Putty, Finishing walls with Acrylic Exterior Emulsion, Painting, PCC of Flooring, Providing and Laying of Tiles And Electricity work at Senior Boys Hostel (Tribal) Gadhi dadar, Distt. Anuppur(M.P.)

DPR AMOUNT Rs 14.49 Lac

SUB ESTIMATE DETAIL	ESTIMATE Amount	G.S.T. 18% & Cont. 1.00 %	Total Amount
MOW	1217688.39	231360.79	1449049
SAY Rs IN LAC	12.17	2.31	14.49

S. No. 37 of The Year 2025-26 dt 29/10/2025
Technical Sanction Accorded for
Rs. 12.17 Lac (Rupees Twelve Lacs Seventeen
Thousand Only)

EXECUTIVE ENGINEER
(BUILDING)

(24) PWD Distt Anuppur (M.P.)

Sub Engineer

Tribal Affairs Department
Anuppur (M.P.)

for Assistant Engineer

Tribal Affairs Department
Shahdol (M.P.)

S No.	SOR	Description	No.	L	B	H/D	Qty	Unit	Rate	Amount
1	2	3	4	5	6	7	8	9	10	11
		Out side	40	1.5		1.2	72.00			
			28	1.5	0.6		25.20			
			35			0.8	28.00			
			40	0.9		0.6	21.60			
			36	1.2		0.6	25.92			
		Inside	30	1.5	1.2		54.00			
			45	1.8		0.6	48.60			
			32	1.5		0.75	36.00			
			45	1		0.9	40.50			
						Total	351.82	Sqm	180	63327.60
13.7		18 mm cement plaster in two coats under layer 12								
		Outside	28	2.8		1	78.40			
		Inside	18	2.5		1	45.00			
						Total	123.40	Sqm	236	29122.40
14.27		Removing white or colour wash by scrapping and								
		Inside Ceiling								
		Dining Room	1	6.45	4		25.80			
		Kitchen & Store	1	6.2	4.15		25.73			
			1	2.5	2.61		6.53			
		Room	1	3.75	6		22.50			
			2	4.85	6		58.20			
		hall	1	6.4	4.7		30.08			
		Room	1	6.3	4.9		30.87			
			1	4.85	6		29.10			
			1	5.7	4.9		27.93			
			1	5.7	4		22.80			
			1	5	3		15.00			
			1	4.2	2.32		9.74			
			1	3.5	3		10.50			
		Varamdah	1	8.4	1.75		14.70			
			1	4.85	1.6		7.76			
			2	6.5	1.75		22.75			
			1	8.8	1.75		15.40			
			1	6.8	1.75		11.90			
		Wall								
		Dining Room L/w	2	6.45		3.1	39.99			
		S/w	2	4		3.1	24.80			
		Kitchen & Store	2	6.2		3.1	38.44			
			2	4.15		3.1	25.73			
			2	2.5		3.1	15.50			
			2	2.61		3.1	16.18			
		Room	2	6		3.1	37.20			
			2	3.75		3.1	23.25			
			4	6		3.1	74.40			
			4	4.85		3.1	60.14			
		hall	2	6.4		3.1	39.68			
			2	4.7		3.1	29.14			
		Room	2	6.3		3.1	39.06			
			2	4.9		3.1	30.38			
			2	6		3.1	37.20			
			2	4.85		3.1	30.07			
			2	5.7		3.1	35.34			
			2	4.9		3.1	30.38			
			2	5.7		3.1	35.34			
			2	4		3.1	24.80			
			2	5		3.1	31.00			
			2	3		3.1	18.60			
			2	4.2		3.1	26.04			
			2	2.32		3.1	14.38			
			2	3.5		3.1	21.70			
			2	3		3.1	18.60			
		Varamdah	2	8.4		3.1	52.08			
			2	4.85		3.1	30.07			
			4	6.5		3.1	80.60			
			2	8.8		3.1	54.56			
			2	6.8		3.1	42.16			
		L/B	14	1.5	1.2		25.20			
			28	1.5		2.5	105.00			
			28	1.2		1	33.60			
		Outside	1	4.2		3.65	15.33			
			1	6.6		3.65	24.09			
			2	2.2		3.65	16.06			

S No.	SOR	Description	No.	L	B	H/D	Qty	Unit	Rate	Amount
1	2	3	4	5	6	7	8	9	10	11
			1	4.55		3.65	16.61			
			1	2.61		3.65	9.53			
			1	3.3		3.65	12.05			
			1	4.2		3.65	15.33			
			1	2.15		3.65	7.85			
			1	4.35		3.65	15.88			
			1	9		3.65	32.85			
			1	5.5		3.65	20.08			
			1	6.1		3.65	22.27			
			1	5.4		3.65	19.71			
			1	8.51		3.65	31.06			
			1	2.38		3.65	8.69			
			1	2		3.65	7.30			
			1	4.9		3.65	17.89			
			1	4.5		3.65	16.43			
			1	2		3.65	7.30			
			1	2.9		3.65	10.59			
			1	8.25		3.65	30.11			
			1	5.2		3.65	18.98			
			1	6.22		3.65	22.70			
			1	5.15		3.65	18.80			
			1	9.3		3.65	33.95			
			1	2.2		3.65	8.03			
			1	3.93		3.65	14.34			
			1	3.8		3.65	13.87			
			1	8.65		3.65	31.57			
			1	1.85		3.65	6.75			
			1	1.25		3.65	4.56			
			1	5.25		3.65	19.16			
			1	3.2		3.65	11.68			
			1	3.1		3.65	11.32			
			1	0.6		3.65	2.19			
			1	6.5		3.65	23.73			
		Varamdah	1	4.1		3.2	13.12			
			1	6.8		3.2	21.76			
			1	6.7		3.2	21.44			
			1	4.45		3.2	14.24			
		L/B Outside wall	2	8.3		3.2	53.12			
		In front of L/B	2	4.45	1.75		15.58			
			2	4.45		3.2	28.48			
		Slab Projection	1	161.8	0.15		24.27			
			1	161.8		0.12	19.42			
		2x32	64	1.3	0.6		49.92			
		2x2x32	128	0.6		1.2	92.16			
							2580.01			
		Deduction for								
		Door opening	17	1		2.1	35.70			
			14	0.8		1.8	20.16			
		Window	55	0.9		1.2	59.40			
							115.26			
						Total	2464.75	Sqm	5	12323.73
13.41		Providing and applying white cement based putty								
		Inside Ceiling								
		Dining Room	1	6.45	4		25.80			
		Kitchen & Store	1	6.2	4.15		25.73			
			1	2.5	2.61		6.53			
		Room	1	3.75	6		22.50			
			2	4.85	6		58.20			
		hall	1	6.4	4.7		30.08			
		Room	1	6.3	4.9		30.87			
			1	4.85	6		29.10			
			1	5.7	4.9		27.93			
			1	5.7	4		22.80			
			1	5	3		15.00			
			1	4.2	2.32		9.74			
			1	3.5	3		10.50			
		Varamdah	1	8.4	1.75		14.70			
			1	4.85	1.6		7.76			
			2	6.5	1.75		22.75			
			1	8.8	1.75		15.40			
			1	6.8	1.75		11.90			
		Wall								
		Dining Room L/w	2	6.45		3.2	41.28			

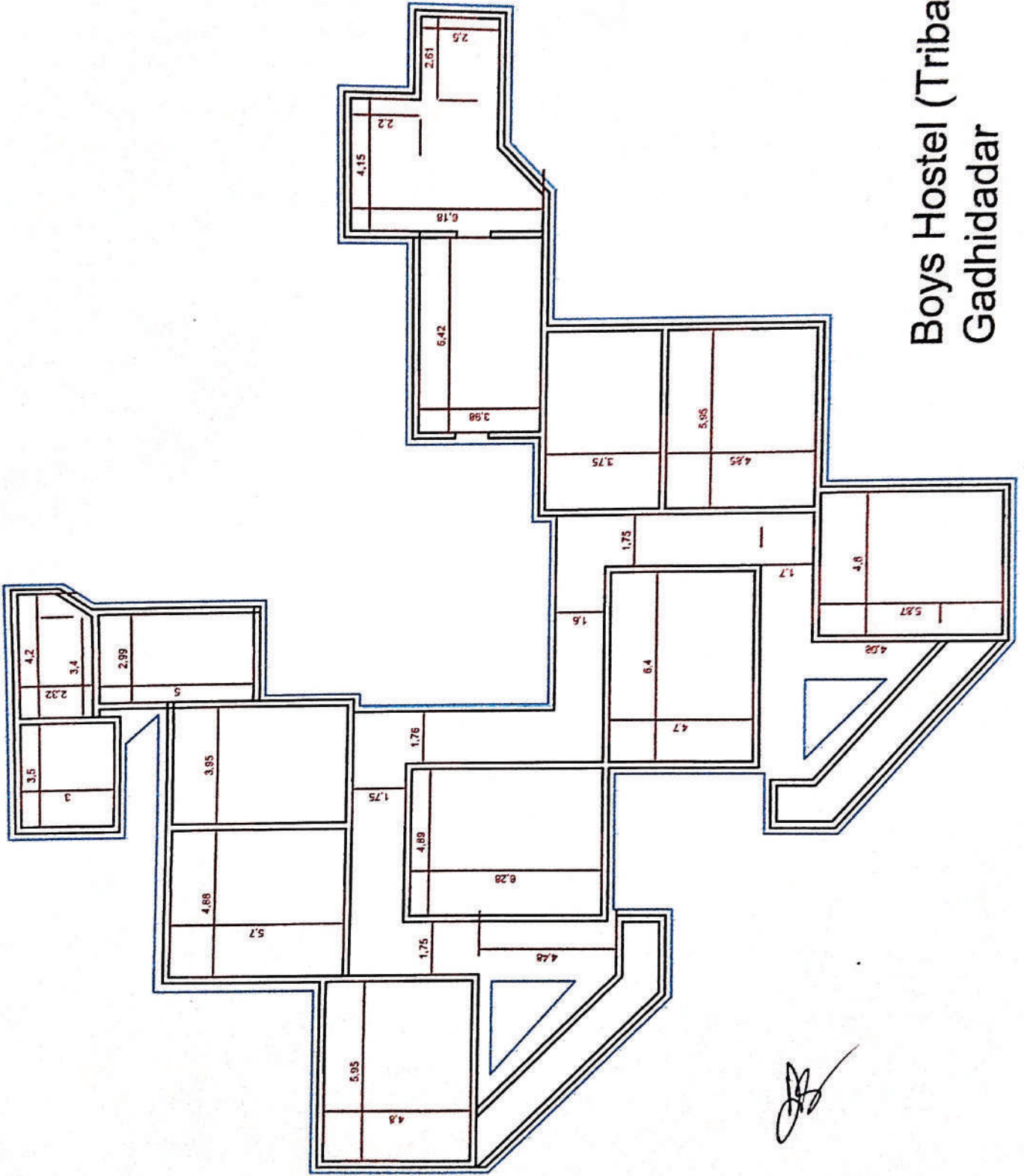
S No.	SOR	Description	No.	L	B	H/D	Qty	Unit	Rate	Amount
1	2	3	4	5	6	7	8	9	10	11
		S/w	2	4		3.2	25.60			
		Kitchen & Store	2	6.2		3.2	39.68			
			2	4.15		3.2	26.56			
			2	2.5		3.2	16.00			
			2	2.61		3.2	16.70			
		Room	2	6		3.2	38.40			
			2	3.75		3.2	24.00			
			4	6		3.2	76.80			
			4	4.85		3.2	62.08			
		hall	2	6.4		3.2	40.96			
			2	4.7		3.2	30.08			
		Room	2	6.3		3.2	40.32			
			2	4.9		3.2	31.36			
			2	6		3.2	38.40			
			2	4.85		3.2	31.04			
			2	5.7		3.2	36.48			
			2	4.9		3.2	31.36			
			2	5.7		3.2	36.48			
			2	4		3.2	25.60			
			2	5		3.2	32.00			
			2	3		3.2	19.20			
			2	4.2		3.2	26.88			
			2	2.32		3.2	14.85			
			2	3.5		3.2	22.40			
			2	3		3.2	19.20			
		Varamdah	2	8.4		3.2	53.76			
			2	4.85		3.2	31.04			
			4	6.5		3.2	83.20			
			2	8.8		3.2	56.32			
			2	6.8		3.2	43.52			
		L/B	14	1.5	1.2		25.20			
			28	1.5		2.5	105.00			
			28	1.2		1	33.60			
		Outside	1	4.2		3.65	15.33			
			1	6.6		3.65	24.09			
			2	2.2		3.65	16.06			
			1	4.55		3.65	16.61			
			1	2.61		3.65	9.53			
			1	3.3		3.65	12.05			
			1	4.2		3.65	15.33			
			1	2.15		3.65	7.85			
			1	4.35		3.65	15.88			
			1	9		3.65	32.85			
			1	5.5		3.65	20.08			
			1	6.1		3.65	22.27			
			1	5.4		3.65	19.71			
			1	8.51		3.65	31.06			
			1	2.38		3.65	8.69			
			1	2		3.65	7.30			
			1	4.9		3.65	17.89			
			1	4.5		3.65	16.43			
			1	2		3.65	7.30			
			1	2.9		3.65	10.59			
			1	8.25		3.65	30.11			
			1	5.2		3.65	18.98			
			1	6.22		3.65	22.70			
			1	5.15		3.65	18.80			
			1	9.3		3.65	33.95			
			1	2.2		3.65	8.03			
			1	3.93		3.65	14.34			
			1	3.8		3.65	13.87			
			1	8.65		3.65	31.57			
			1	1.85		3.65	6.75			
			1	1.25		3.65	4.56			
			1	5.25		3.65	19.16			
			1	3.2		3.65	11.68			
			1	3.1		3.65	11.32			
			1	0.6		3.65	2.19			
			1	6.5		3.65	23.73			
		Varamdah	1	4.1		3.2	13.12			
			1	6.8		3.2	21.76			
			1	6.7		3.2	21.44			
			1	4.45		3.2	14.24			

S No.	SOR	Description	No.	L	B	H/D	Qty	Unit	Rate	Amount
1	2	3	4	5	6	7	8	9	10	11
		L/B Outside wall	2	8.3		3.2	53.12			
		In front of L/B	2	4.45	1.75		15.58			
			2	4.45		3.2	28.48			
		Slab Projection	1	161.8	0.15		24.27			
			1	161.8		0.12	19.42			
		2x32	64	1.3	0.6		49.92			
		2x2x32	128	0.6		1.2	92.16			
							2614.74			
		Deduction for								
		Door opening	17	1		2.1	35.70			
			14	0.8		1.8	20.16			
		Window	55	0.9		1.2	59.40			
							115.26			
						Total	2499.48	Sqm	74	184961.67
13.45		Distemping with 1st quality acrylic distemper								
		Inside Ceiling								
		Dining Room	1	6.45	4		25.80			
		Kitchen & Store	1	6.2	4.15		25.73			
			1	2.5	2.61		6.53			
		Room	1	3.75	6		22.50			
			2	4.85	6		58.20			
		hall	1	6.4	4.7		30.08			
		Room	1	6.3	4.9		30.87			
			1	4.85	6		29.10			
			1	5.7	4.9		27.93			
			1	5.7	4		22.80			
			1	5	3		15.00			
			1	4.2	2.32		9.74			
			1	3.5	3		10.50			
		Varamdah	1	8.4	1.75		14.70			
			1	4.85	1.6		7.76			
			2	6.5	1.75		22.75			
			1	8.8	1.75		15.40			
			1	6.8	1.75		11.90			
		Wall								
		Dining Room L/w	2	6.45		3.2	41.28			
		S/w	2	4		3.2	25.60			
		Kitchen & Store	2	6.2		3.2	39.68			
			2	4.15		3.2	26.56			
			2	2.5		3.2	16.00			
			2	2.61		3.2	16.70			
		Room	2	6		3.2	38.40			
			2	3.75		3.2	24.00			
			4	6		3.2	76.80			
			4	4.85		3.2	62.08			
		hall	2	6.4		3.2	40.96			
			2	4.7		3.2	30.08			
		Room	2	6.3		3.2	40.32			
			2	4.9		3.2	31.36			
			2	6		3.2	38.40			
			2	4.85		3.2	31.04			
			2	5.7		3.2	36.48			
			2	4.9		3.2	31.36			
			2	5.7		3.2	36.48			
			2	4		3.2	25.60			
			2	5		3.2	32.00			
			2	3		3.2	19.20			
			2	4.2		3.2	26.88			
			2	2.32		3.2	14.85			
			2	3.5		3.2	22.40			
			2	3		3.2	19.20			
		Varamdah	2	8.4		3.2	53.76			
			2	4.85		3.2	31.04			
			4	6.5		3.2	83.20			
			2	8.8		3.2	56.32			
			2	6.8		3.2	43.52			
		L/B	14	1.5	1.2		25.20			
			28	1.5		2.5	105.00			
			28	1.2		1	33.60			
							1662.64			
		Deduction for								
		Door opening	17	1		2.1	35.70			

S No.	SOR	Description	No.	L	B	H/D	Qty	Unit	Rate	Amount
1	2	3	4	5	6	7	8	9	10	11
			1	6.45	4	0.075	1.94			
			1	6.2	4.15	0.075	1.93			
			1	2.5	2.61	0.075	0.49			
			1	3.75	6	0.075	1.69			
			2	4.85	6	0.075	4.37			
			1	6.4	4.7	0.075	2.26			
			1	6.3	4.9	0.075	2.32			
			1	4.85	6	0.075	2.18			
			1	5.7	4.9	0.075	2.09			
			1	5.7	4	0.075	1.71			
			1	5	3	0.075	1.13			
			1	4.2	2.32	0.075	0.73			
			1	3.5	3	0.075	0.79			
			1	8.4	1.75	0.075	1.10			
			1	4.85	1.6	0.075	0.58			
			2	6.5	1.75	0.075	1.71			
			1	8.8	1.75	0.075	1.16			
			1	6.8	1.75	0.075	0.89			
						Total	29.05	Cum	4471	129867.68
		ELECTRICAL WORK								100000.00
						Total				1217688.39
						Add GST @ 18% & Cont. @ 1.00%				231360.79
						Grand Total				1449049.18
						Say in Lacs				14.49

Sub Engineer
Tribal Affairs Department
Anuppur (M.P.)

Assistant Engineer
Tribal Affairs Department
Shahdol (M.P.)



Boys Hostel (Tribal)
Gadhidadar

[Handwritten signature]