

## Estimate for Construction of Farmer Shed (20'X40' ft) In the Storage Campus of Markfed At Budhar Distt.- Shahdol (MLA Fund)

(AS PER MP.P.W.D. BUILDING & ELECTRIC SOR WEF 01.01.2024 AND ROAD SOR WEF 25.03.2022)

S.No	Item of Work	Measurements					UNIT	RATE	AMOUNT
		NO	L	B	H	QTY			
1	<b>SOR 2.1.1</b>								
	Surface dressing of the ground i/c removing of vegetation and in equalities not exceeding 15 cm in depth and disposal of rubbish, lead upto 50 m and lift upto 1.5 m, disposed soil to be levelled and neatly dressed :								
		1	9.00	15.00		135.00	100 SQM	8.03	1084.00
2	<b>SOR 2.28</b>								
	Excavating holes more than 0.10 cum & upto 0.5 cum including getting out the excavated soil, then refiling the soil as required in layers not exceeding 20 cm in depth, including consolidating each deposited layer by ramming, watering etc., disposing of surplus excavated soil; as directed within a lead of 50 m and lift upto 1.5m.								
	FOR VERTICAL POST	5	2.00			10.00	EACH	42.00	420.00
3	<b>SOR 4.1.1.4</b>								
	Providing and laying in position cement concrete of specified grade excluding the cost of centring and shuttering - All work upto plinth level with 20 mm nominal size graded stone aggregate <b>M-10</b>								
		10	0.6	0.6	0.6	2.160	Cum	3890.00	8402.00
4	<b>SOR 2.26</b>								
	Supplying and filling in plinth with crusher stone dust / coarse sand under floors including, watering, ramming consolidating in layers not exceeding 20cm in depth and dressing complete.								
		1	12.20	6.10	0.2	14.884	Cum	672.00	10002.00
5	<b>SOR 11.72.2</b>								
	Providing and laying factory made coloured chamfered edge Cement Concrete paver blocks of required strength, thickness and size/shape, made by table vibratory method using PU mould, laid in required colour and pattern over 50mm thick compacted bed of stone dust, compacting and proper embedding/laying of inter locking paver blocks into the bedding layer through vibratory compaction by using plate vibrator, filling the joints with sand and cutting of paver blocks as per required size and pattern, finishing and sweeping extra sand including locking edges with M 15 cement concrete in footpath, parks, lawns, drive ways or light traffic parking etc. complete as per manufacturer's specifications and direction of Engineerin- Charge. 60mm thick C.C. paver block of M-35 grade with approved colour, design and pattern.								
		1	12.2	6.1		74.420	Cum	680.00	50605.00

<b>6</b>	<b>SOR 10.14.1</b>								
	Steel work in built up tubular trusses including cutting, hoisting fixing in position and applying a priming coat of approved steel primer, welded and bolted including special shaped washers etc. complete. Hot finished welded type tubes								
	<b>VERTICAL POST 60X60X3.2 MM</b>	2	5	3.6	5.5	198.000			
	COST OF KRASHAK VISHRAM SHED (FARMER SHED)	1	10	13	4.07	529.100			
	<b>PURLIN 50X50X2.9MM</b>	2	5	12.2	4.07	496.540			
	<b>PLATE NUT BOLT</b>	8%	198.00	529.10	496.540	97.891			
						<b>1321.531</b>	<b>KG</b>	<b>132.00</b>	<b>174442.00</b>
<b>7</b>	<b>SOR 12.15</b>								
	Providing and fixing pre-coated galvanised iron profile sheets (size, shape and pitch of corrugation as approved by Engineer-in-charge) 0.50 mm + 0.05 %, total coated thickness with zinc coating 120 gsm as per IS: 277 in 240 mpa steel grade, 5-7 microns epoxy primer on both side of the sheet and polyester top coat 15-18 microns. Sheet should have protective guard film of 25 microns minimum to avoid scratches while transportation and should be supplied in single length upto 12 metre or as desired by Engineer-in-charge. The sheet shall be fixed using self drilling /self tapping screws of size (5.5x 55mm) with EPDM seal, complete upto any pitch in horizontal/ vertical or curved surfaces excluding the cost of purlins, rafters and trusses and including cutting to size and shape wherever required.								
		2	12.2	3.6		87.840	<b>SQM</b>	<b>652.00</b>	<b>57271.00</b>
<b>8</b>	<b>SOR 12.16.1</b>								
	Providing and fixing pre-coated galvanised steel sheet roofing <b>Ridges plain (500 - 600mm)</b> . accessories 0.50 mm + 0.05 % total coated thickness, Zinc coating 120gsm as per IS: 277 in 240 mpa steel grade, 5-7 microns epoxy primer on both side of the sheet and polyester top coat 15- 18 microns using self-drilling/ self- tapping screws complete								
		1	12.2			12.200	<b>RMT</b>	<b>320.00</b>	<b>3904.00</b>
<b>9</b>	<b>SOR 6.7.3.2</b>								
	Brick work with fly ash lime bricks (FALG Bricks) conforming to IS:12894-2002, in super structure above plinth level up to floor two level in : Having 50 kg / cm 2 average compressive strength. Cement mortar 1:6 (1 cement : 6 sand)								
	OUTER LW	1	6.10	0.20	0.90	1.098			
	OUTER SW	6	0.60	0.20	0.90	0.648			
	<b>TOTAL</b>				<b>TOTAL</b>	<b>1.746</b>	<b>Cum</b>	<b>4936.00</b>	<b>8618.00</b>

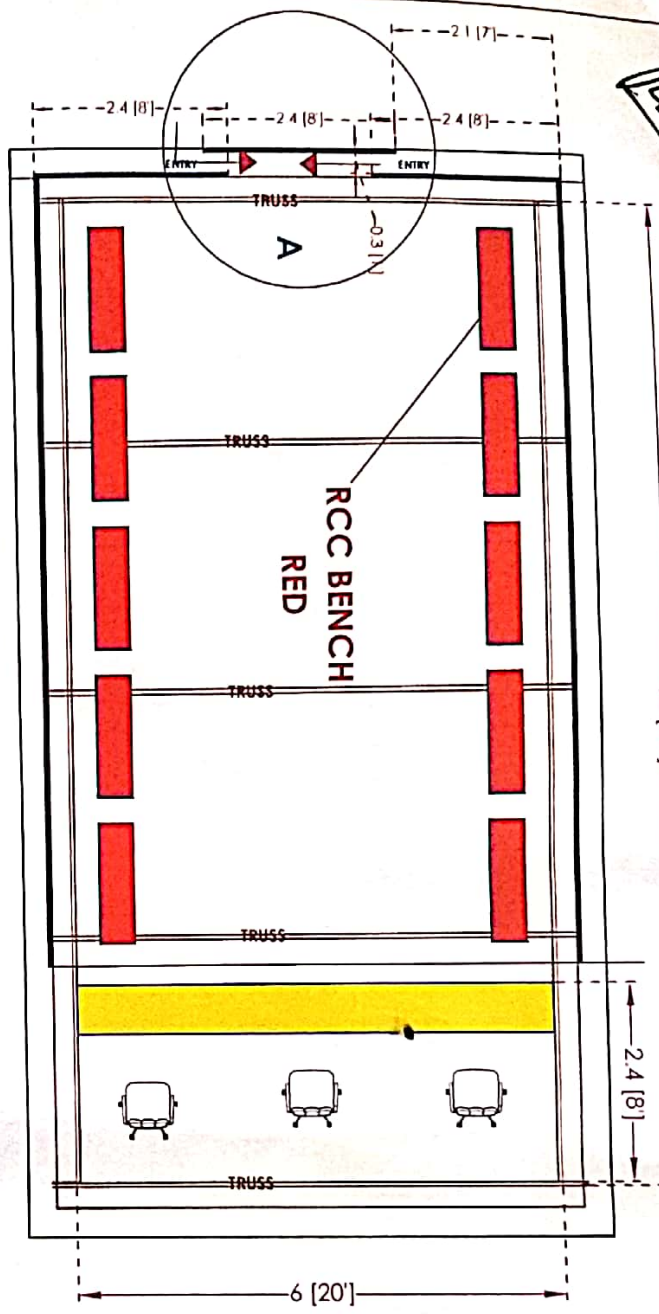
<b>10</b>	<b>SOR 13.2.2</b>								
	15 mm cement plaster on the rough side of single or half brick wall of mix 1:6 (1 cement : 6 sand)								
		1	6.10		0.70	4.27			
		6	0.60		0.70	2.52			
					<b>TOTAL</b>	<b>6.79</b>	<b>SQM</b>	<b>168.00</b>	<b>1141.00</b>
<b>11</b>	<b>SOR 13.1.2</b>								
	12 mm cement plaster of mix : 1:6 (1 cement : 6 sand)								
		1	6.10		0.70	4.27			
		6	0.40		0.70	1.68			
					<b>TOTAL</b>	<b>5.95</b>	<b>SQM</b>	<b>160.00</b>	<b>952.00</b>
<b>12</b>	<b>SOR 13.46</b>								
	Wall painting with plastic emulsion paint of approved brand and manufacture to give an even shade: Two or more coats on new work.	<b>15M M</b>	<b>12 MM</b>						
		6.79	5.95			12.74	<b>Sqm</b>	<b>64.00</b>	<b>815.00</b>
<b>13</b>	<b>SOR 7.35.2</b>								
	Stone work ( machine cut edges) for wall lining upto 10 m height etc. (Veneer work) backing filled with a grout of 12mm thick cement mortar 1:3 (1 Cement : 3 sand) and jointed with Cement mortar 1:2 (1 cement : 2 marble dust) including rubbing and polishing complete. (To be secured to the backing by means of cramps which shall be paid for separately) 25mm thick Dholpur stone slabs exposed face dressed and rubbed.								
	<b>PLATFORM</b>								
		1	6.10		0.60	3.66	<b>SQM</b>	<b>1469.00</b>	<b>5377.00</b>
<b>14</b>	<b>SOR 11.22.2</b>								
	Providing and fixing 18mm thick gang saw cut mirror polished (premoulded and prepolished) machine cut for kitchen platforms, vanity counters, window sills , facias and similar locations of required size of approved shade, colour and texture laid over 20mm thick base cement mortar 1:4 (1 cement : 4 sand) with joints treated with white cement, mixed with matching pigment, epoxy touch ups, including rubbing, curing moulding and polishing to edge to give high gloss finish wherever required etc. complete at all levels. Samples approved by Engineer- in Charge. <b>Granite fine grained dark crystal of other colours and various patterns</b>								
	<b>PLATFORM</b>								
		1	6.10		0.60	3.66	<b>SQM</b>	<b>2356.00</b>	<b>8623.00</b>

15	<b>SOR 21.1.2.2</b>								
	P/F aluminium work for doors, windows, ventilators and partitions with extruded built up standard tubular sections/ appropriate Z sections and other sections of approved make conforming to IS: 733 and IS: 1285, fixing with dash fasteners of required dia and size, i/n necessary filling up the gaps at junctions, i.e. at top, bottom and sides with required EPDM rubber/ neoprene gasket etc. i/n cleat angle, Aluminium snap beading for glazing / paneling, C.P. brass / stainless steel screws, all complete as per architectural drawings and the directions of Engineer-in-charge. (Glazing, paneling and dash fasteners to be paid for separately) For shutters of doors, windows and ventilators i/n P/ F hinges/ pivots and making provision for fixing of fittings wherever required i/n the cost of EPDM rubber / neoprene gasket required								
		1	6.10	2.10	6.00	76.860			
		2	2.40	3.10	6.00	89.280			
					<b>TOTAL</b>	<b>166.14</b>	<b>KG</b>	<b>484.00</b>	<b>80412.00</b>
16	<b>SOR 21.17</b>								
	Providing and fixing anodised aluminium grill (anodised transparent or dyed to required shade according to IS: 1868 with minimum anodic coating of grade AC15) of approved design/pattern, with approved standard section and fixed to the existing window frame with C.P. brass/ stainless steel screws @ 200mm centre to centre, including cutting the grill to proper opening size for fixing and operation of handles and fixing approved anodised aluminium standard section around the opening, all complete as per requirement and direction of Engineer-in-Charge. (Only weight of grill to be measured for payment								
		1	6.10	2.10	1.50	19.215			
		2	2.40	3.10	1.50	22.320			
					<b>TOTAL</b>	<b>41.54</b>	<b>KG</b>	<b>521.00</b>	<b>21640.00</b>
17	<b>SOR 21.3.1</b>								
	P/F glazing in aluminium door, window, ventilator shutters and partitions etc. with EPDM rubber/ neoprene gasket etc. complete as per the architectural drawings and the directions of engineer-in-charge . (Cost of aluminium snap beading shall be paid in basic item) :)								
		1	6.10		0.90	5.49			
		2	2.40		0.90	4.32			
					<b>TOTAL</b>	<b>9.81</b>	<b>Sqm</b>	<b>774.00</b>	<b>7593.00</b>

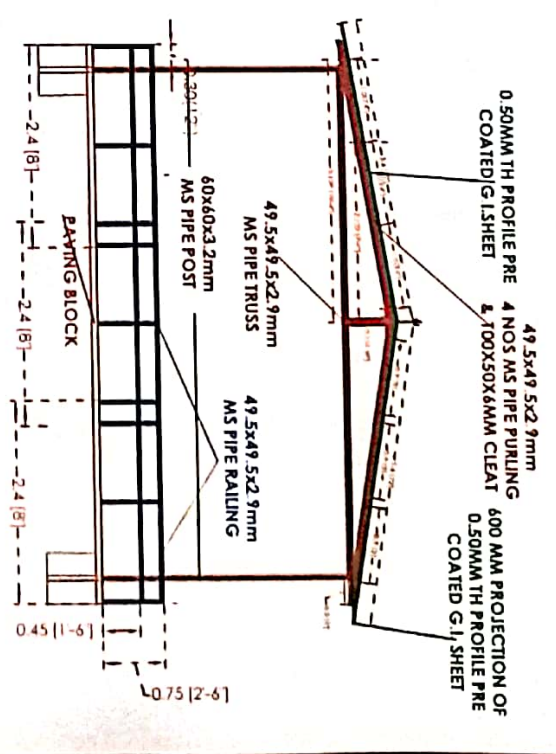
18	<b>SOR 21.2.1</b>								
	Providing and fixing 12mm thick Pre-laminated particle board flat pressed three layer or graded wood particle board conforming to IS: 12823 Grade I Type II, in panelling fixed in aluminium doors, windows shutters and partition frames with C.P. brass / stainless steel screws etc. complete as per architectural drawings and directions of engineer-in-charge <b>Pre-laminated particle board with decorative lamination on one side and balancing lamination on other side.</b>								
		1	6.10		1.20	7.32			
		2	2.40		1.20	5.76			
					<b>TOTAL</b>	<b>13.08</b>	<b>Sqm</b>	<b>802.00</b>	<b>10490.00</b>
19	<b>SOR 13.64</b>								
	Painting with synthetic enamel paint of approved brand and manufacture of required colour to give an even shade: Two or more coats on new work		<b>FACT OR</b>						
					<b>TOTAL</b>	<b>40.00</b>	<b>SQM</b>	<b>53.00</b>	<b>2120.00</b>
20	<b>NON SOR ITEMS</b>								
	Suppling and fixing R.C.C. BENCH 1500X350X450MM As Approved by engineer in charge								
						<b>10.000</b>	<b>RMT</b>	<b>4000.00</b>	<b>40000.00</b>
<b>Total:-</b>									<b>492827.00</b>

# KRASHAK VISHRAM SHED (FARMER SHED)

**REVISED WITH RAILING**



**PLAN**

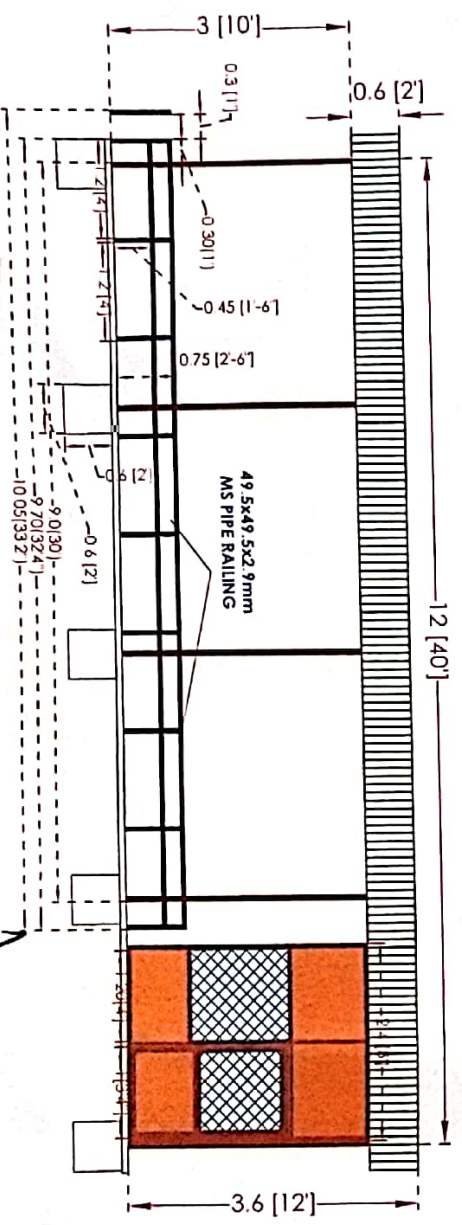


**SIDE ELEVATION**

**NOTE-**

- 0.50MM TH PROFILE PRE COATED GREEN COLOUR G.I.SHEET
- ALL M.S. STRUCTURE PAINTED WITH BROWN COLOUR PAINT
- 49 5x49 5x2 9mm MS PIPE RAILING, VERTICAL MEMBER GROUTED 600 MM DEEP WITH M-15 CC

Ar. Richa Pathak



**FRONT ELEVATION**

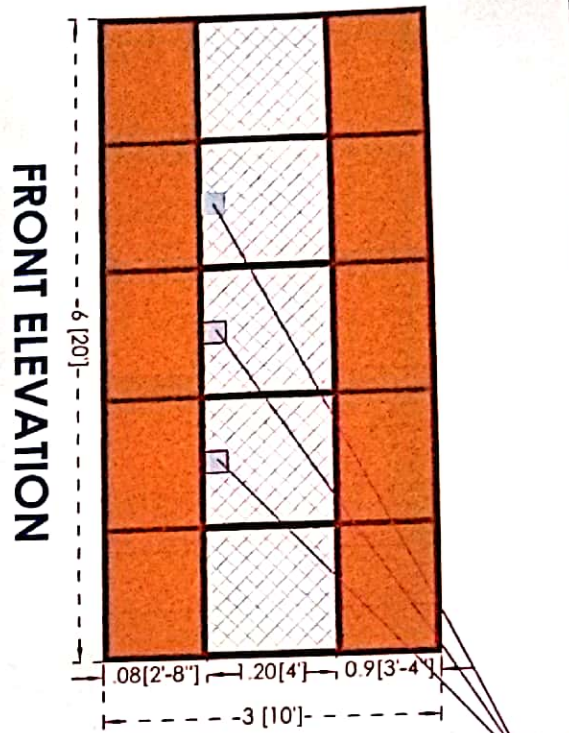
Assistant Engineer  
M.P. State Co-operative  
Marketing Federation Ltd., Bhopal

M.P. State Co-operative  
Marketing Federation Ltd., Bhopal

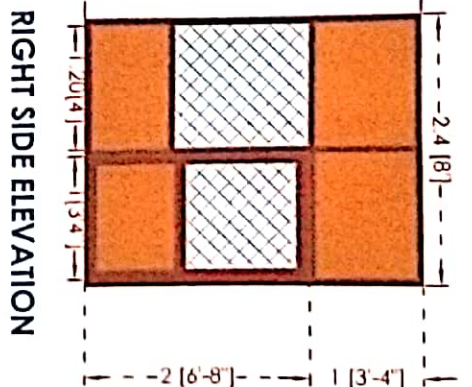
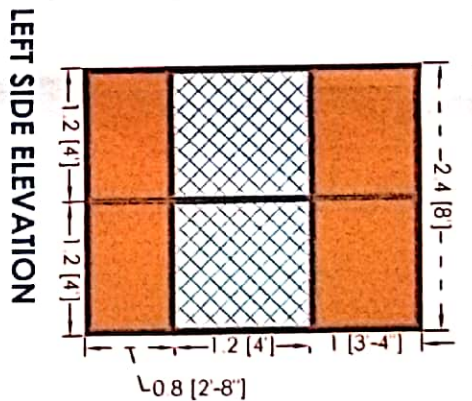
Chief Engineer  
M.P. State Co-operative  
Marketing Federation Ltd., Bhopal

<b>CLIENT</b>	COA-CA/2021/118/2021 M.P. STATE CO-OPERATIVE MARKETING FED. LTD.	<b>TITLE</b>	FARMER SHED WORKING PLAN
<b>PROJECT</b>	FARMER SHED AT MARKFED CAMPUS	<b>DRG. NO</b>	NO-01

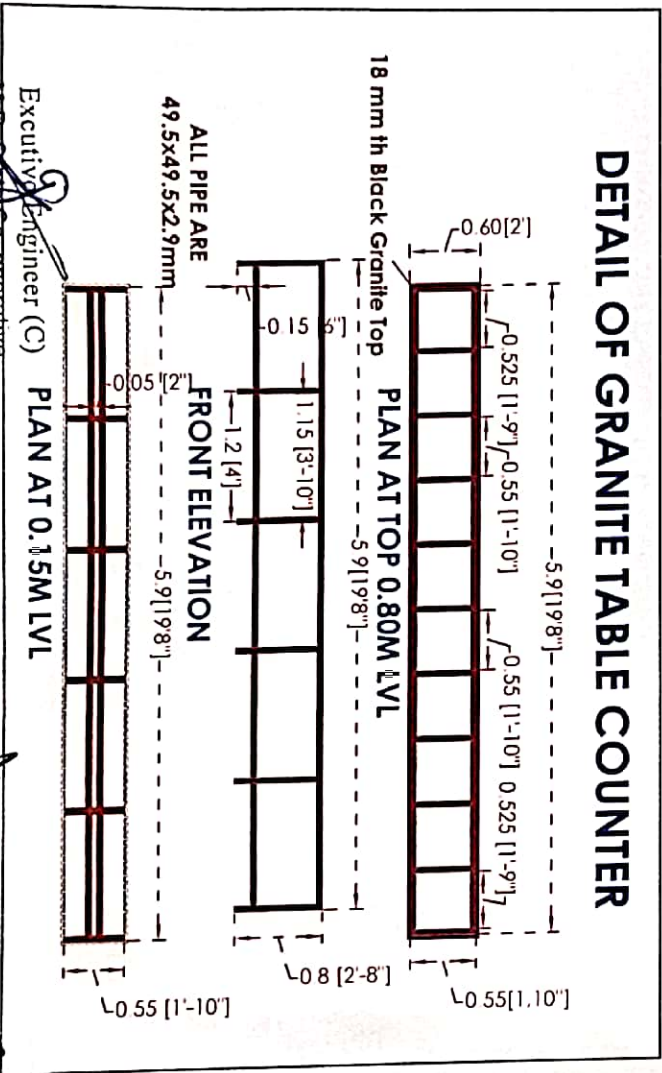




200x200 mm glass opening



### DETAIL OF GRANITE TABLE COUNTER

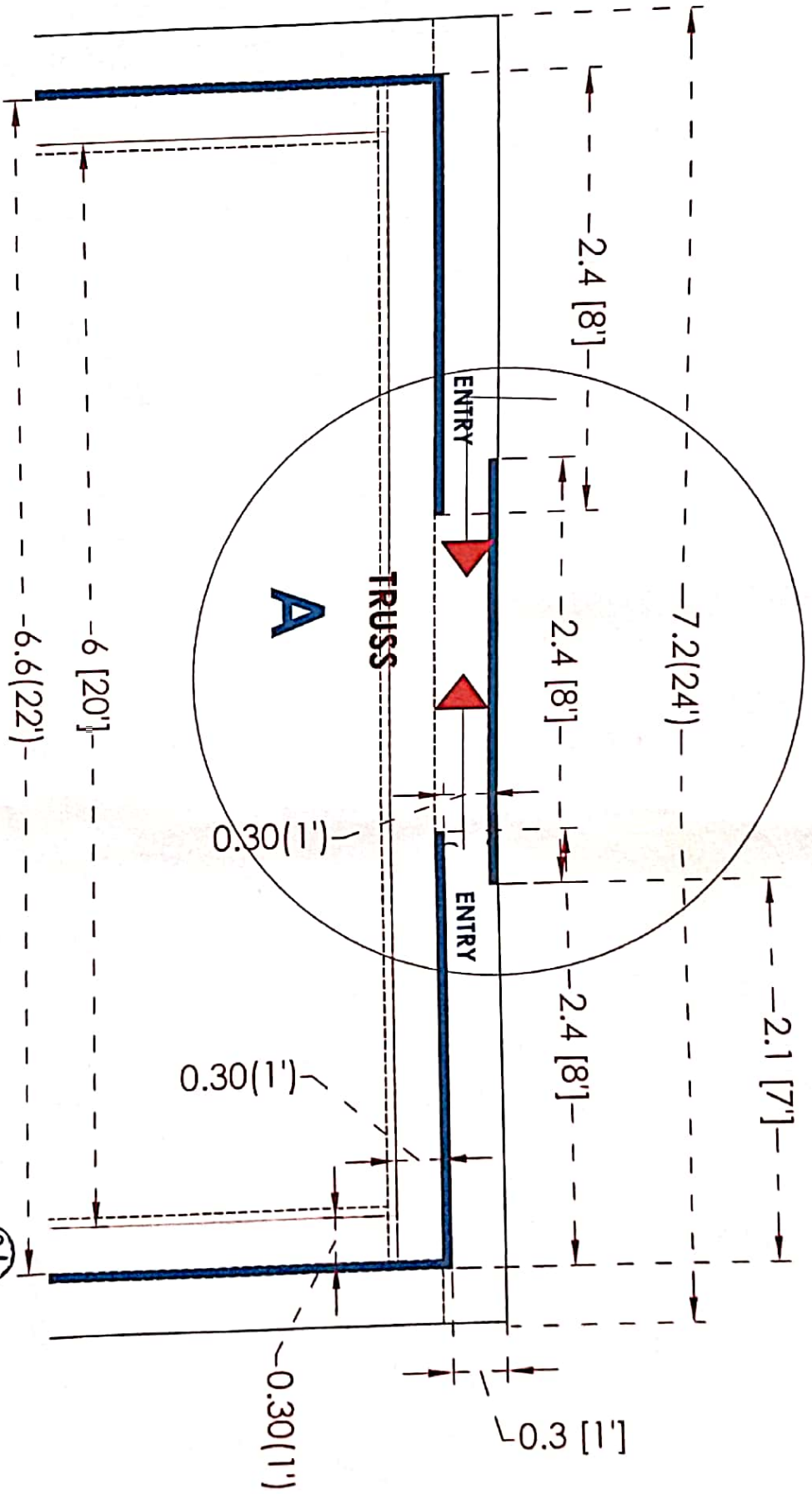


### DETAILS OF ALUMINUM PARTITION (Brown Colour Polyester powder coated aluminum Section )

S.NO	PARTICULARS	SIZE
1	Fixed partition Outer Frame	63.5x38.10 mm SF
2	Fixed partition Inner Frame	43.5x38.1mm DP
3	Door vertical	83x44.5 mm
4	Door Horizontal	114x44.5 mm
5	Aluminum partition Seat	4 mm th
6	Partition Glass	4 mm th Float Glass
7	Aluminum Gull	6 mm th

CLIENT	Ar. Richa Pathak
PROJECT	FARMER SHED AT MARKFED CAMPUS
TITLE	DETAIL OF PARTITION & COUNTER
DRG. NO.	02

Executive Engineer (C) M.P. State Co-operative Marketing Federation Ltd., Bhopal  
 M.P. State Co-operative Marketing Federation Ltd., Bhopal  
 M.P. State Co-operative Marketing Federation Ltd., Bhopal



Executive Engineer (C)  
M.P. State Co-operative  
Marketing Federation Ltd., Bhopal

Chief Engineer  
M.P. State Co-operative  
Marketing Federation Ltd., Bhopal

Ar. Richa Pathak

CLIENT	COA-CA/2021/438831 Pathak
PROJECT	FARMER SHED AT MARKFED CAMPUS
TITLE	PLAN OF RAILING ENTRANCE
DRG. NO	03