

Existing ECD Building

Existing strength of material lab

Environmental engg. lab

jackfruit tree

purlin(25mmx50mmx2mm)

single section rafter beam(50mmx75mmx2mm)

Truss beam

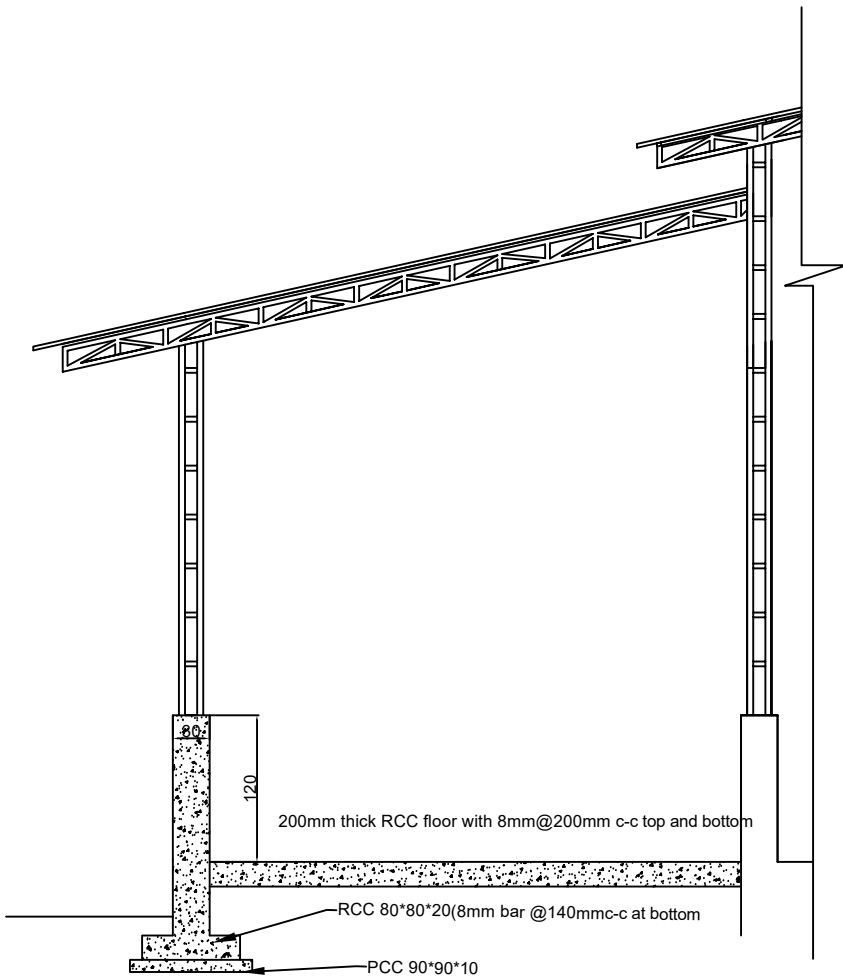
Electrical trench

Road

TOP VIEW

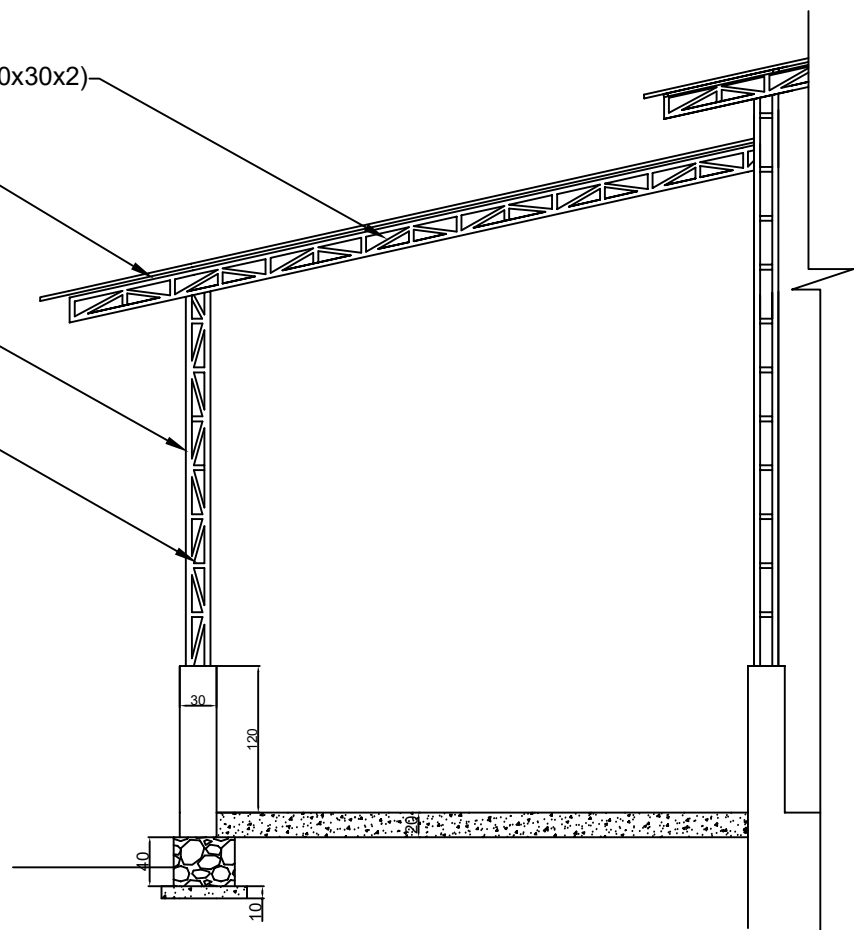
ALL DIMENSIONS ARE IN CM

Temporary Extension of strength of material lab at CED	
PLAN	
DWG NO : 1	
SCALE : NTS	
DATE :	ENGINEERING UNIT , NATIONAL INSTITUTE OF TECHNOLOGY CALCUTTA

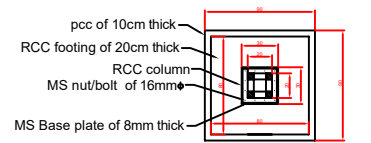


SECTION A-A

- GI hollow section(30x30x2)
- GI hollow section(40x40x2)
- GI hollow section(50x50x2)
- GI hollow section(40x40x2)



SECTION B-B



cross sectional top view of footing