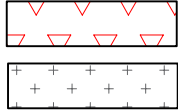




INDEX:



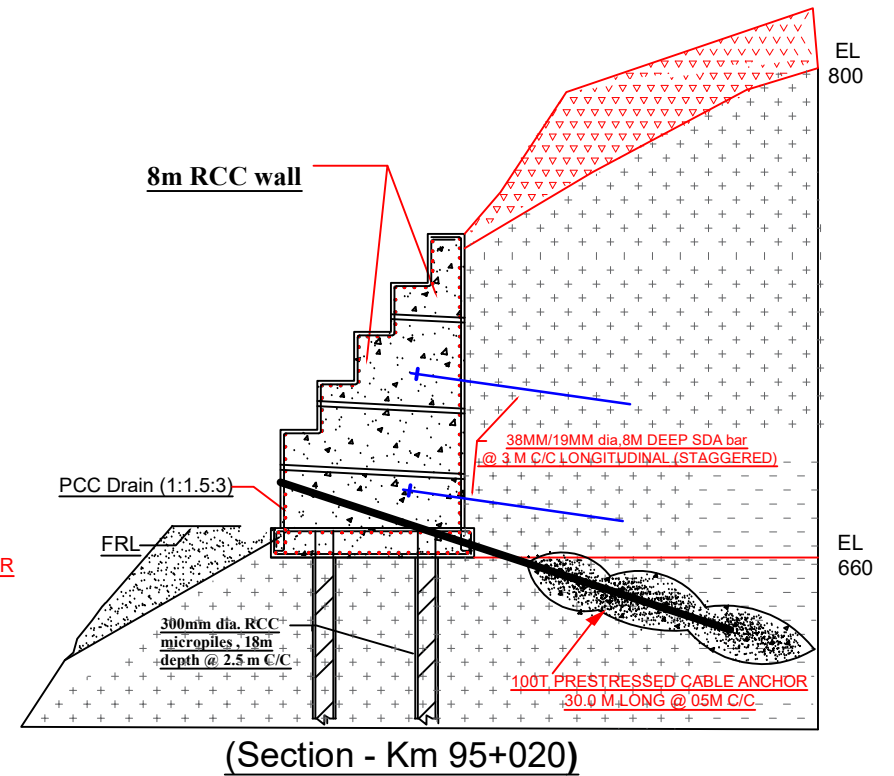
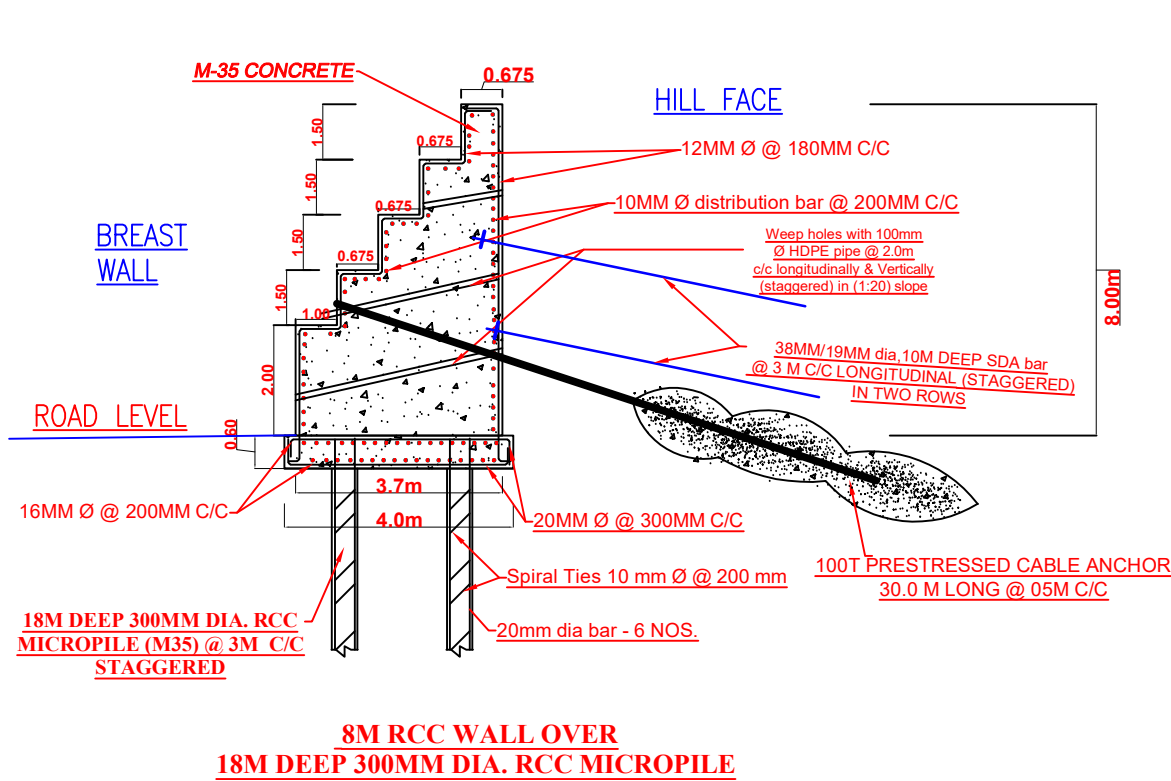
OVERBURDEN/ SLIDE DEBRIS

PHYLLITIC, QUARTZITE

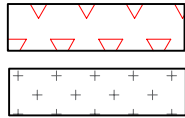
(Km 94+940 to 95+040)

Material Properties

- o Concrete: M35Grade ($f_{ck}=35 \text{ N/mm}^2$)
- o Steel: Fe500 Grade ($f_y=500 \text{ N/mm}^2$)
- o Clear cover: 50 mm (foundation), 40 mm (stem)
- o Micropiling Concrete: M35Grade ($f_{ck}=35 \text{ N/mm}^2$)



INDEX:



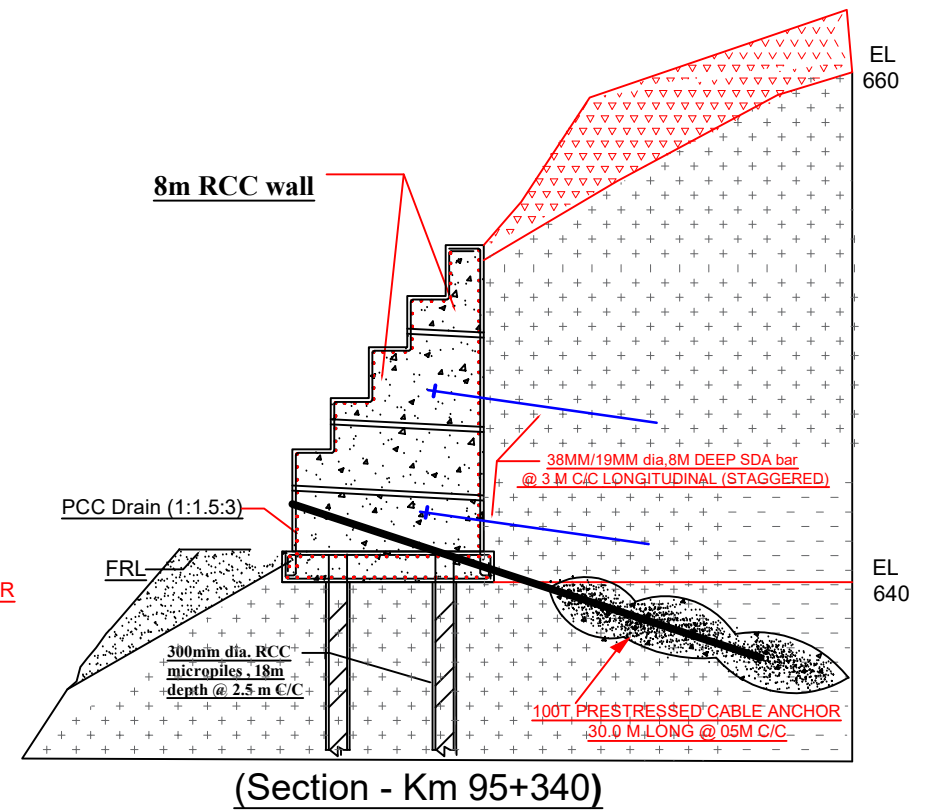
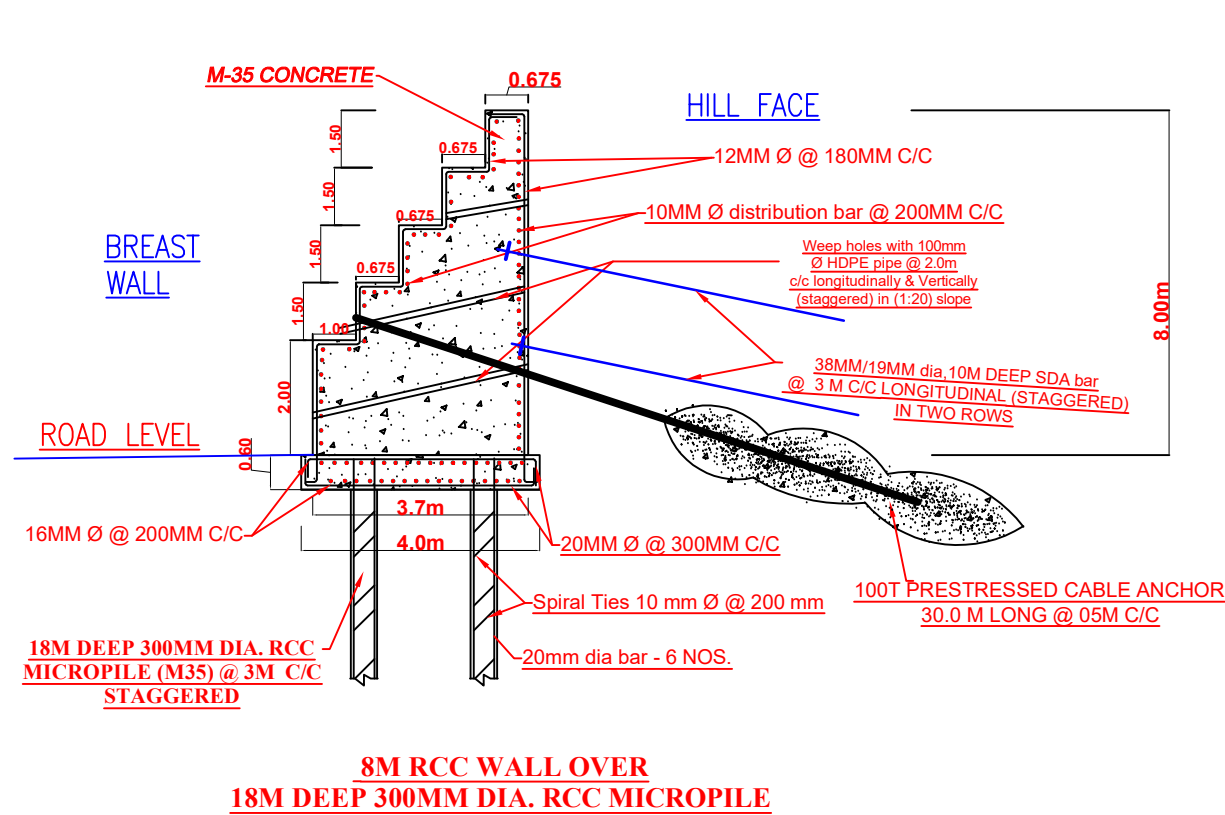
OVERBURDEN/ SLIDE DEBRIS

PHYLLITIC, QUARTZITE

(Km 95+200 to 95+360)

Material Properties

- o Concrete: M35 Grade ($f_{ck}=35 \text{ N/mm}^2$)
- o Steel: Fe500 Grade ($f_y=500 \text{ N/mm}^2$)
- o Clear cover: 50 mm (foundation), 40 mm (stem)
- o Micropiling Concrete: M35 Grade ($f_{ck}=35 \text{ N/mm}^2$)



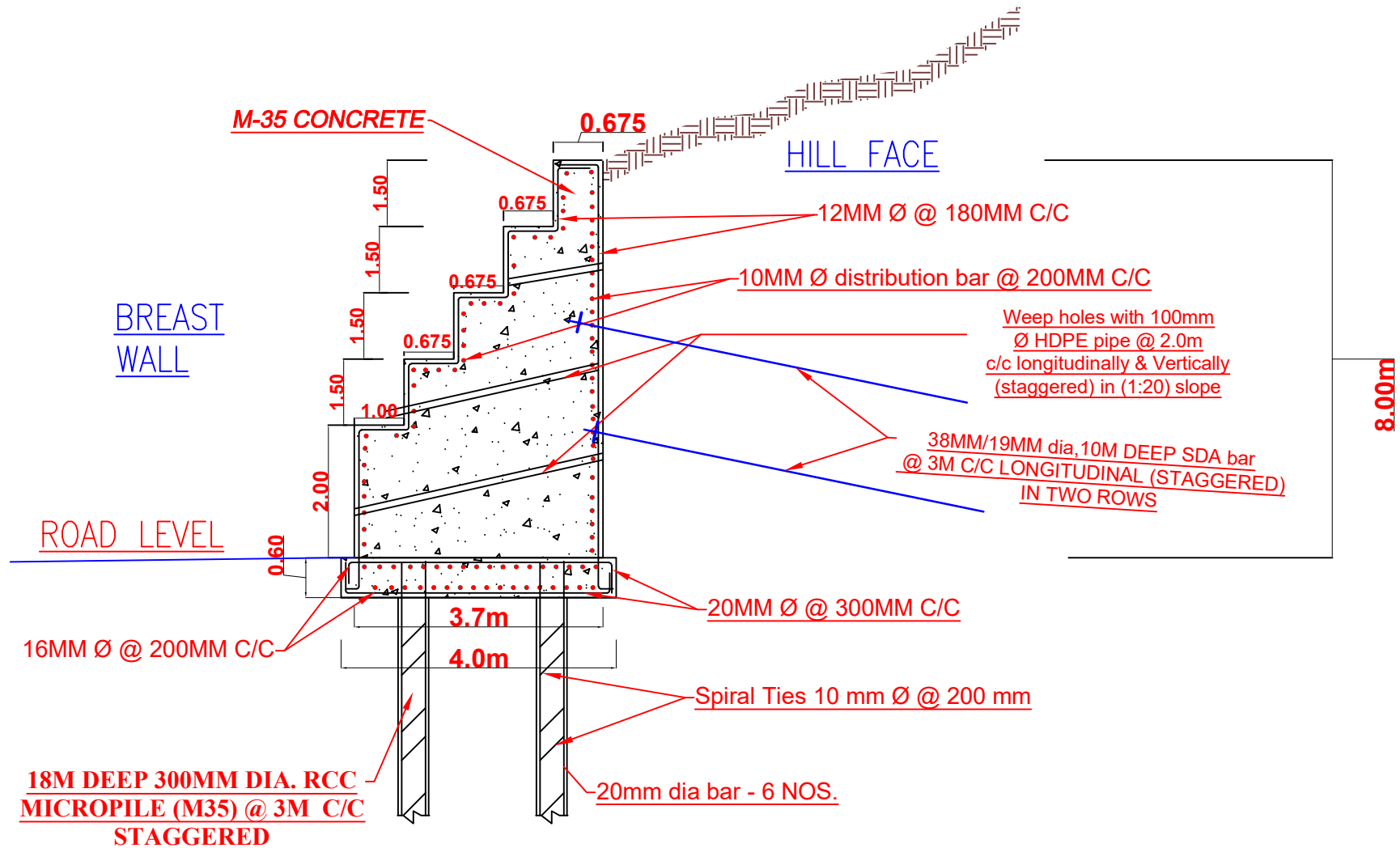
(Km 95+380 to 95+560)

Material Properties

- o Concrete: M35Grade ($f_{ck}=35 \text{ N/mm}^2$)
- o Steel: Fe500 Grade ($f_y=500 \text{ N/mm}^2$)
- o Clear cover: 50 mm (foundation), 40 mm (stem)
- o Micropiling Concrete: M35Grade ($f_{ck}=35 \text{ N/mm}^2$)

PHASE-I HILL SIDE:

8m high RCC Stepped wall over 300 mm dia - RCC micropile of depth= 18m



(Km 95+684 to 95+734)

- o Concrete: M35Grade ($f_{ck}=35 \text{ N/mm}^2$)
- o Steel: Fe500 Grade ($f_y=500 \text{ N/mm}^2$)
- o Clear cover: 50 mm (foundation), 40 mm (stem)
- o Micropiling Concrete: M35Grade ($f_{ck}=35 \text{ N/mm}^2$)

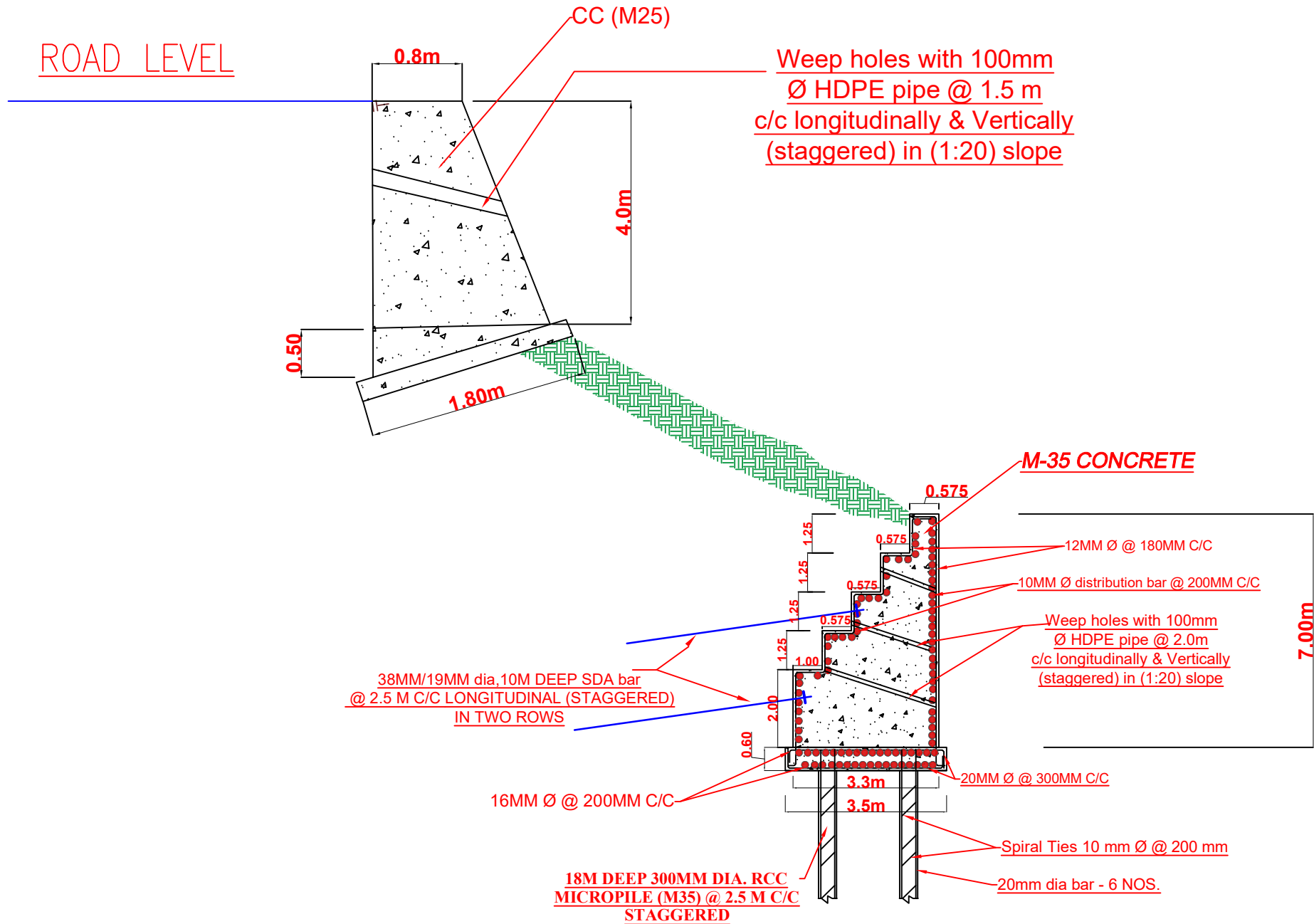


IV) Km (95+360 to 95+560 & 95+610 TO 95+660) (Valley Side)

Proposed 4m high CC Gravity wall (M25) &
7m height RCC wall over 18m deep 300mm Dia Microipile

Material Properties

- o Concrete: M35Grade ($f_{ck}=35 \text{ N/mm}^2$)
- o Steel: Fe500 Grade ($f_y=500 \text{ N/mm}^2$)
- o Clear cover: 50 mm (foundation), 40 mm (stem)
- o Micropiling Concrete: M35Grade ($f_{ck}=35 \text{ N/mm}^2$)



V) ALONG VALLEY TOE: (94+840 to 94+940)

7m high RCC wall over 350mm dia micropile of 18m depth

Material Properties

- o Concrete: M35Grade ($f_{ck}=35 \text{ N/mm}^2$)
- o Steel: Fe500 Grade ($f_y=500 \text{ N/mm}^2$)
- o Clear cover: 50 mm (foundation), 40 mm (stem)
- o Micropiling Concrete: M35Grade ($f_{ck}=35 \text{ N/mm}^2$)

