



FINAL DETAILED PROJECT REPORT

JAN 2026 R0

PROJECT:- PROVISION OF CONSULTANCY SERVICES FOR THE PREPARATION OF DPR FOR 21 FOB'S IN UDHAMPUR TO BANIHAL STRETCH (NH – 44) IN JAMMU & KASHMIR



VOLUME – 6 VUP/ HIGHWAY DRAWINGS

DPR CONSULTANT

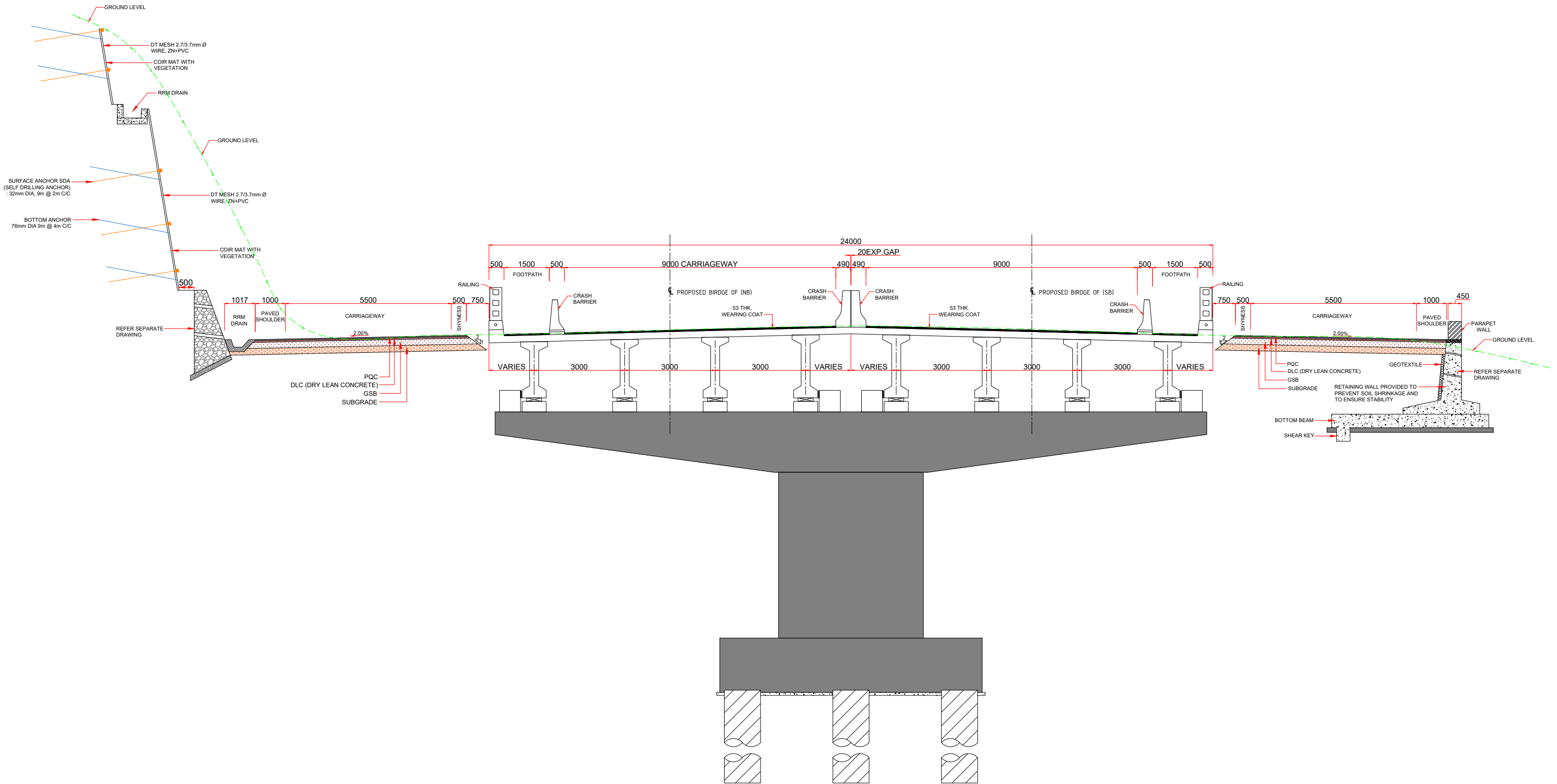
M/s Tumas Turkish Engineering Consulting and Contracting Inc. Co. in JV with G- Eng Advisory Services Pvt. Ltd. In association with AVOK Engineering Consulting and Contracting Pvt. Ltd.

CLIENT

National Highways Authority of India




TYPICAL CROSS SECTION



TCS-1
(FROM CH. 0+000 TO 0+040, CH. 0+220 TO 0+360)

NOTE- COMPACTION OF SOIL OR EARTH WORK MUST ADHERE TO SPECIFIC INDIAN STANDARD CODES TO ENSURE QUALITY AND STRUCTURAL INTEGRITY

REV	DATE	DESCRIPTION	A	B	C	D
R0	JUNE - 2025	SUBMISSION OF TYPICAL CROSS SECTION				

CLIENT:

NATIONAL HIGHWAY AUTHORITY OF INDIA
Ministry of Road Transport and Highways (Govt. of India)
G-5 and G-6, Dwarka Sector 10, Delhi - 110075

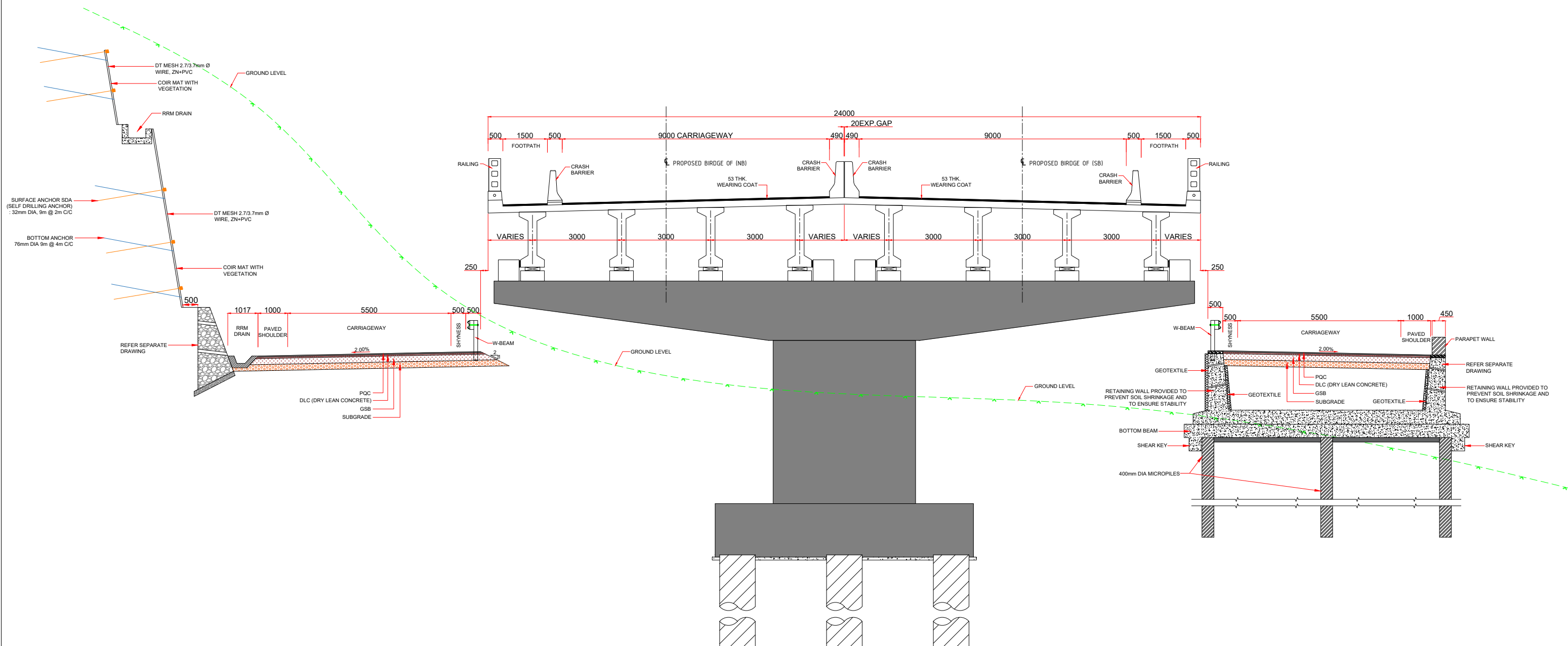
DPR CONSULTANT:

M/s Tamas Turkish Engineering Consulting
and Contracting Inc. Co. in JV with G-Eng Advisory Services Pvt. Ltd.
In association with AVOK Engineering Consulting and Contracting Pvt. Ltd.

PROJECT:
Construction of Tunnel/Viaducts at Identified Sliding/Slip Zones in Design Ch.
130+600 to 130 + 750 Ch. 131+170 to 131 + 763 Ch. 132+560 to 133 + 168 Ch.
133+560 to 133 + 743 and Ch. 147+877 to 148+715 on EPC mode in
Udhampur-Ramban Section in the UT of Jammu & Kashmir under NHDP Phase-II
- Preparation of DPR for 21 No FODs

DRAWING TITLE:
TYPICAL CROSS SECTION
SCALE : 1:1000
PAPER SIZE : A3

DWG. NO. VUP/JM/HW/DWG/TCS/01			
DATE: JUNE - 2025		REV-R0	
DESIGNED	DRAWN	CHECKED	APPROVED
HS	SP	AK	SM



TCS-2
(FROM CH. 0+040 TO 0+100, CH. 0+160 TO 0+220)

NOTE- COMPACTION OF SOIL OR EARTH WORK MUST ADHERE TO SPECIFIC INDIAN STANDARD CODES TO ENSURE QUALITY AND STRUCTURAL INTEGRITY

REV	DATE	DESCRIPTION	A	B	C	D
R0	JUNE - 2025	SUBMISSION OF TYPICAL CROSS SECTION				

CLIENT:

NATIONAL HIGHWAY AUTHORITY OF INDIA

Ministry of Road Transport and Highways (Govt. of India)

G-5 and G-6, Dwarka Sector 10, Delhi - 110075

DPR CONSULTANT :

G-ENG

M/s Tamas Turkish Engineering Consulting and Contracting Inc. Co. in JV with G-Eng Advisory Services Pvt. Ltd. In association with AVOK Engineering Consulting and Contracting Pvt. Ltd.

PROJECT :

Construction of Tunnel/Viaducts at Identified Sliding/Slip Zones in Design Ch. 130+600 to 130 + 750 Ch. 131+170 to 131 + 763 Ch. 132+560 to 133 + 168 Ch. 133+560 to 133 + 743 and Ch. 147+877 to 148+715 on EPC mode in Udhampur-Ramban Section in the UT of Jammu & Kashmir under NHDP Phase-II - Preparation of DPR for 21 No FODs

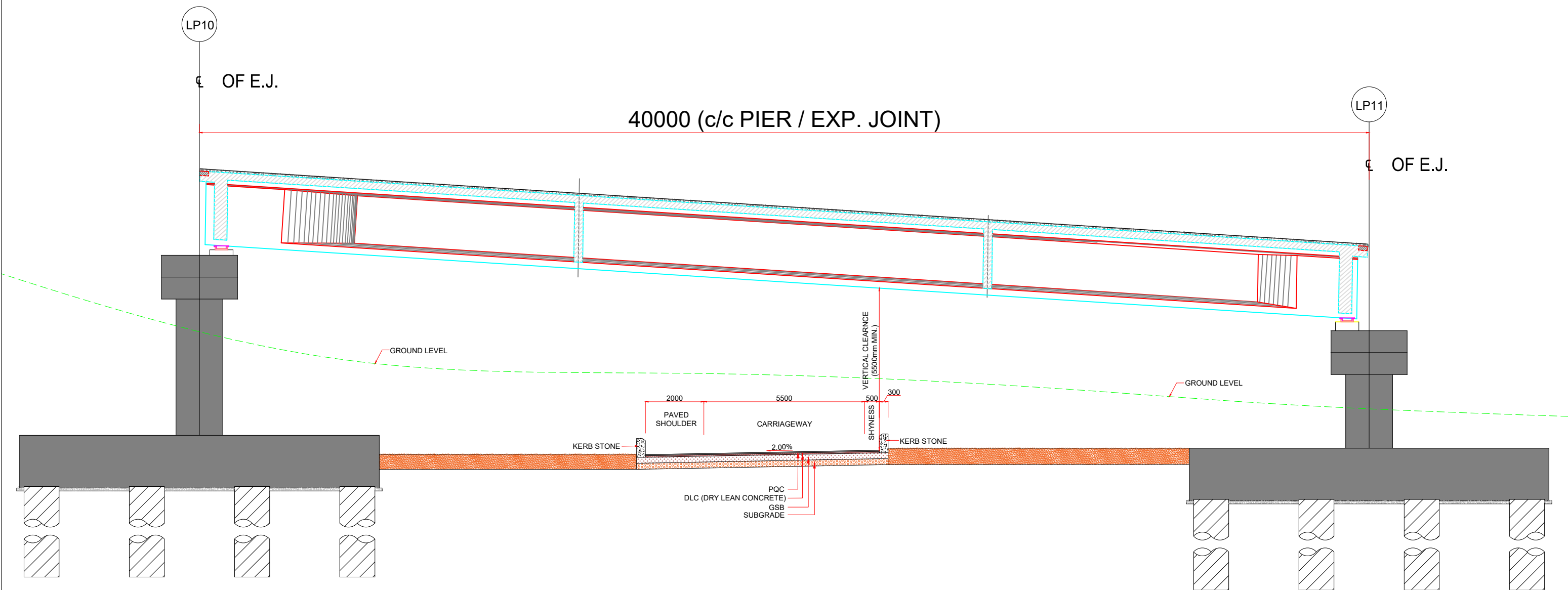
DRAWING TITLE :

TYPICAL CROSS SECTION

DESIGNED	DRAWN	CHECKED	APPROVED
HS	SP	AK	SM

SCALE : 1:1000

PAPER SIZE : A3



TCS-3
(FROM CH. 0+100 TO 0+160)

NOTE- COMPACTION OF SOIL OR EARTH WORK MUST ADHERE TO SPECIFIC INDIAN STANDARD CODES TO ENSURE QUALITY AND STRUCTURAL INTEGRITY

REV	DATE	DESCRIPTION	A	B	C	D
R0	JUNE - 2025	SUBMISSION OF TYPICAL CROSS SECTION				

CLIENT:
NATIONAL HIGHWAY AUTHORITY OF INDIA
Ministry of Road Transport and Highways (Govt. of India)
G-5 and G-6, Dwarka Sector 10, Delhi - 110075

DPR CONSULTANT:
G-ENG
M/s Tamas Turkish Engineering Consulting and Contracting Inc. Co. in JV with G-Eng Advisory Services Pvt. Ltd.
In association with AVOK Engineering Consulting and Contracting Pvt. Ltd.

PROJECT:
Construction of Tunnel/Viaducts at Identified Sliding/Slip Zones in Design Ch. 130+600 to 130 + 750 Ch. 131+170 to 131 + 763 Ch. 132+560 to 133 + 168 Ch. 133+560 to 133 + 743 and Ch. 147+877 to 148+715 on EPC mode in Udhampur-Ramban Section in the UT of Jammu & Kashmir under NHDP Phase-II - Preparation of DPR for 21 No FODs

DRAWING TITLE:
TYPICAL CROSS SECTION
SCALE : 1:1000
PAPER SIZE : A3

DWG. NO. VUP/JM/HW/DWG/TCS/03			
DATE: JUNE - 2025		REV-R0	
DESIGNED HS	DRAWN SP	CHECKED AK	APPROVED SM

ALIGNMENT REPORT

Horizontal Alignment Report														
S.No.	Intersection Point Chainage	Intersection Point (X)	Intersection Point (Y)	Element	Arc Start chainage	Arc End chainage	Arc Length (m)	Radius (m)	Hand Of Arc	Transition Start Chainage	Transition End Chainage	Transition Length (m)	Speed (km/hr)	Superelevation (%)
1	15.1315	528716.531	3668617.91	Arc	8.764	21.499	12.735	33	RIGHT	-	-	-	20	5
2	86.7355	528687.131	3668552.533	Arc	83.603	89.867	6.265	150	LEFT	-	-	-	40	4.74
3	114.8485	528675.463	3668523.393	Arc	101.888	127.81	25.921	17	RIGHT	-	-	-	20	5
4	144.393	528639.433	3668535.929	Arc	129.625	159.161	29.536	17	RIGHT	-	-	-	20	5
5	258.78	528695.584	3668644.529	Arc	199.173	318.387	119.214	170	LEFT	184.173	333.387	15	40	4.18

VERTICAL ALIGNMENT REPORT										
No.	PVI Station	PVI Elevation	Grade In	Grade Out	Profile Curve Length	K Value	Curve Radius	A (Grade Change)	Profile Curve Type	Sub-Entity Type
1	70.15	1042.895	-1.52%	0.00%	60	39.471	3947.121	1.52%	Sag	Syetric Parabola
2	205.68	1042.895	0.00%	4.54%	70	15.432	1543.159	4.54%	Sag	Syetric Parabola

PLAN & PROFILE

JAMMU

SRINAGAR

LEGEND:-

PLAN:-

NORTH ARROW

PROPOSED CENTER LINE

CARRIAGEWAY LINE

PAVED SHOULDER

DRAIN

CRASH BARRIER

RETAINING WALL

PROFILE:-

FINISHED ROAD LEVEL

GROUND LEVELS

