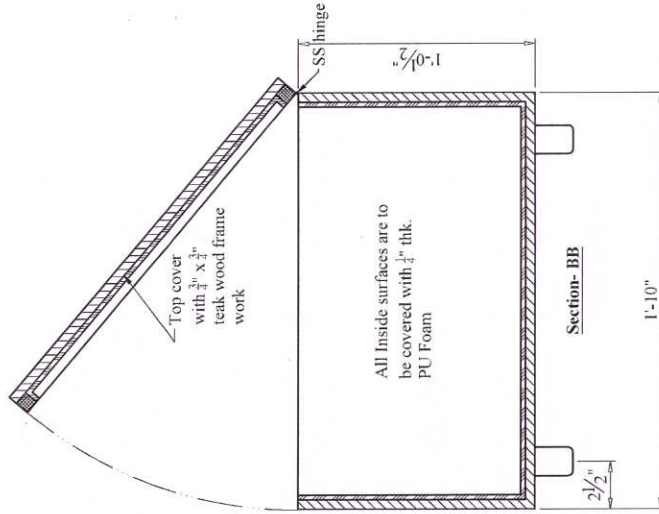
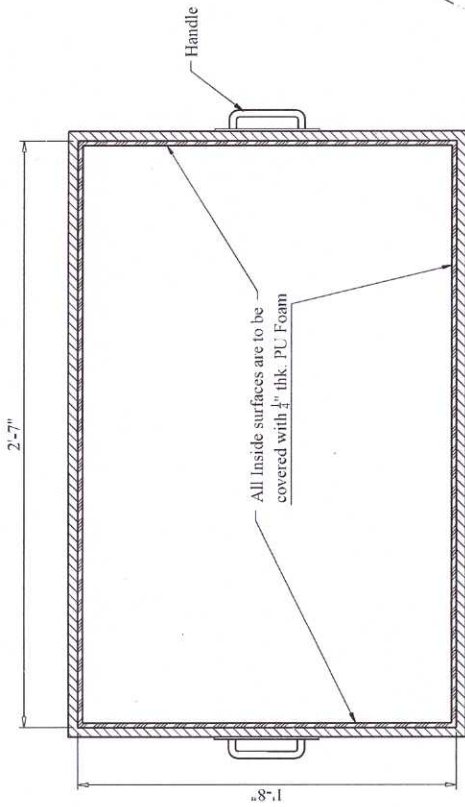
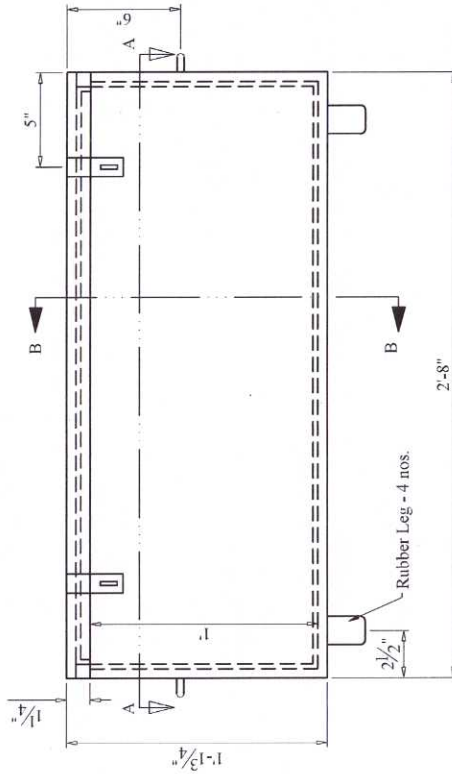


Note:- Box made with  $\frac{1}{2}$ " Ply wood (BWP, IS 710, fire-retardant/fire-roof). All out side surfaces are to be covered with rexin (approved colour).  
 All inside surfaces are to be covered with  $\frac{1}{4}$ " thk. PU foam.  
 Top cover & body must be attached with a chain.  
 Handle, Locking arrangement & hinge must be made of Stainless Steel materials.



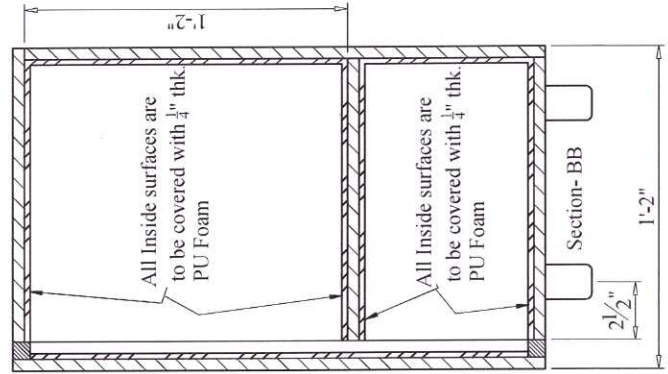
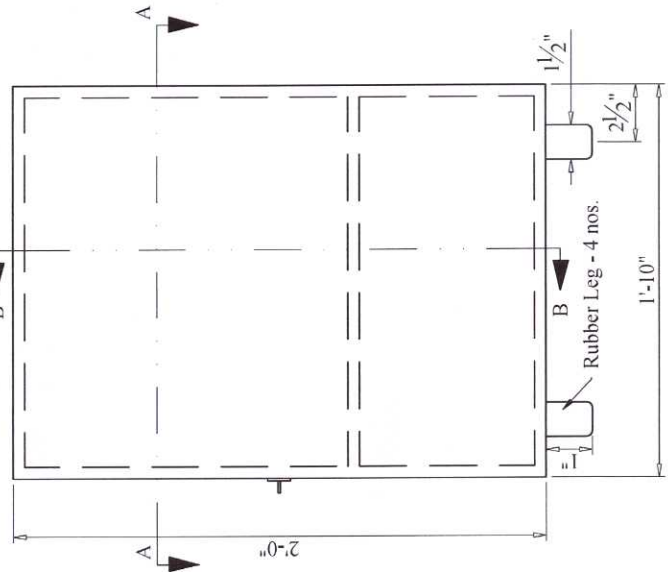
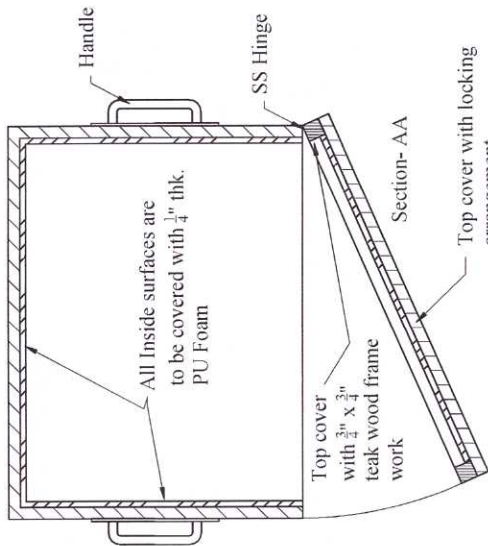
Section- AA



NATIONAL COUNCIL OF SCIENCE MUSEUMS			
TARAMANDAL PACKING BOX-02			
DRG. NO.	DATE	SCALE	TOLERANCE
TR-1/P-04	06-04-2026	0 : 00	± 0.1mm (3mm)
TITLE -			
BOX FOR DOME			
All Dimensions are in feet-inches			
DRN BY	CSD & APPRO. BY		
MINAUSHI DUTTA	PRAVEEN CHANDAGAR		

*Praveen*  
 08/04/2026

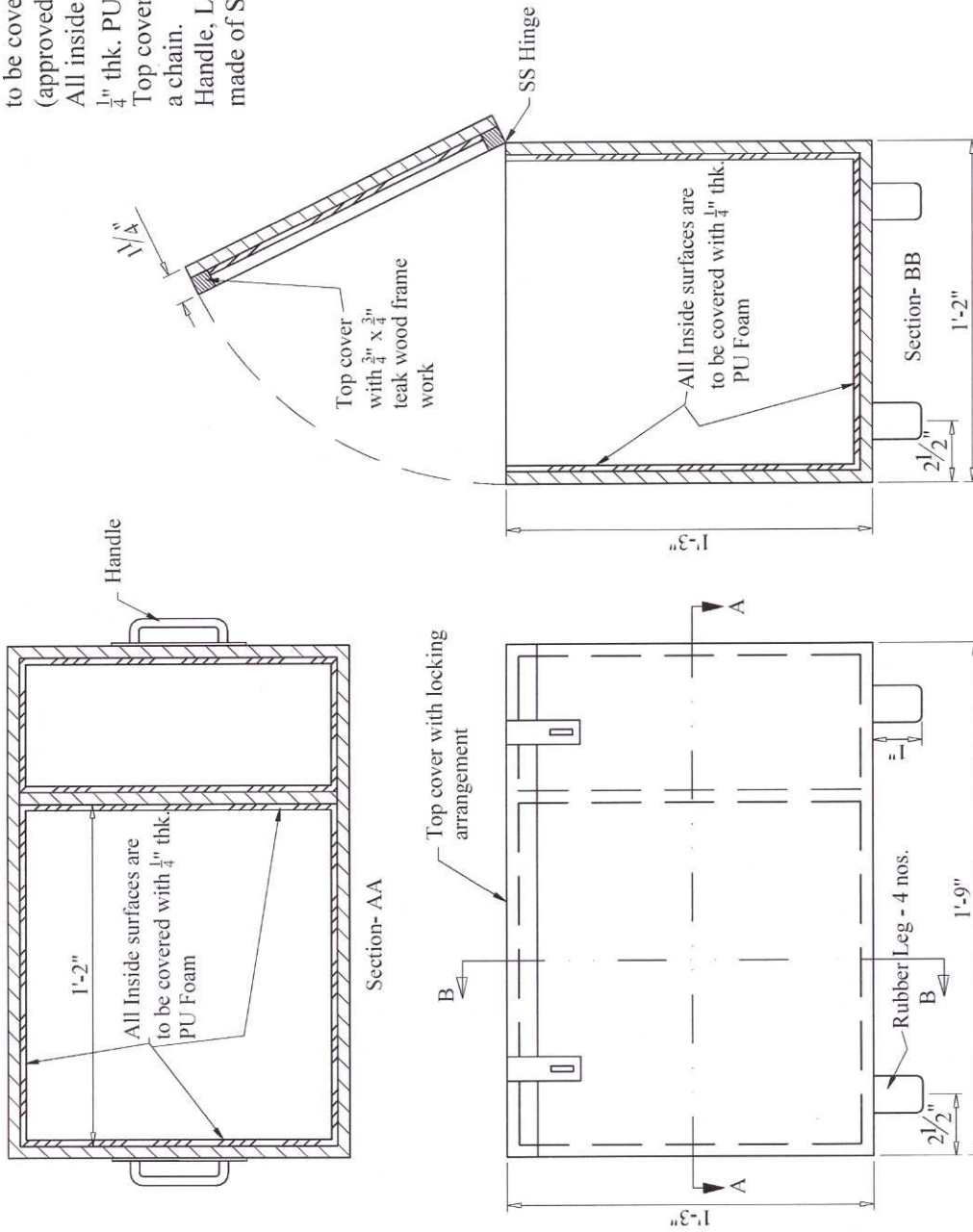
Note:- Box made with  $\frac{1}{2}$ " Ply wood (BWP, IS 710, fire-retardant/fire-roof). All out side surfaces are to be covered with rexin (approved colour).  
 All inside surfaces are to be covered with  $\frac{1}{4}$ " thk. PU foam.  
 Top cover & body must be attached with a chain.  
 Handle, Locking arrangement & hinge must be made of Stainless Steel materials.



NATIONAL COUNCIL OF SCIENCE MUSEUMS			
TARAMANDAL PACKING BOX-04			
DRG. NO. TR-IP-04	DATE 08-04-2026	SCALE 0:1.00	TOLERANCE A: ±0.1mm
TITLE:- BOX FOR PROJECTOR			All Dimensions are in millimetres
DRN. BY MMAKSHI DUTTA	CHD.& APPR. BY PRAVEEN CHANDKAR		

*Pls*  
28/04/26

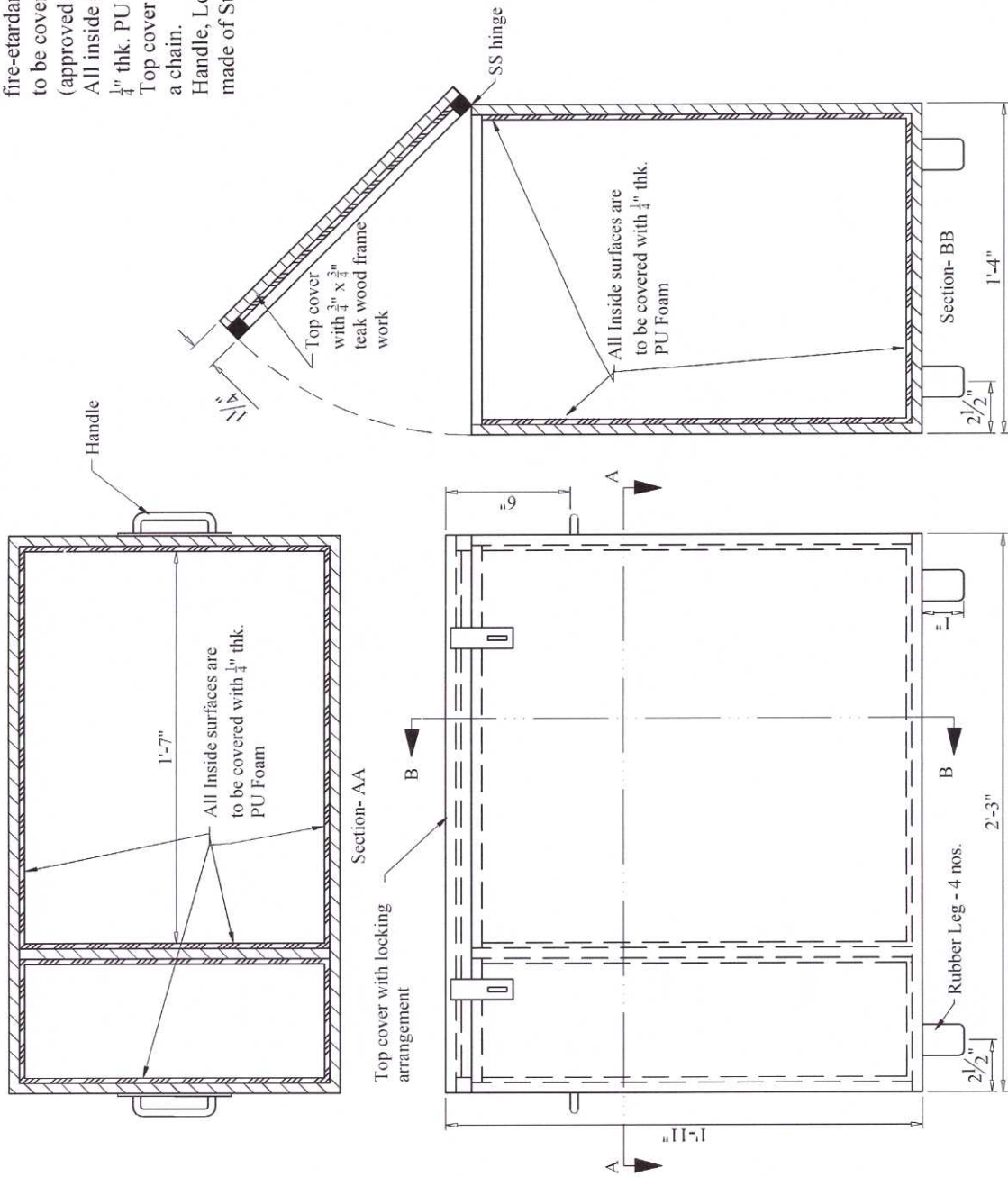
Note:- Box made with  $\frac{1}{2}$ " Ply wood (BWP, IS 710, fire-ardant/fire-roof). All out side surfaces are to be covered with rexin (approved colour).  
 All inside surfaces are to be covered with  $\frac{1}{4}$ " thk. PU foam.  
 Top cover & body must be attached with a chain.  
 Handle, Locking arrangement & hinge must be made of Stainless Steel materials.




NATIONAL COUNCIL OF SCIENCE MUSEUMS			
TARAMANDAL PACKING BOX-01			
DRG. NO.	DATE	SCALE	TOLERANCE
TR-1/P-04	06-04-2026	0 : 00	# (1:100/1000)
TITLE:-			All Dimensions are in feet-inches
DRAWN BY			CHECKED & APPROVED BY
MINAKSHI DUTTA			PRAVEEN CHANDAKAR

*Praveen*  
06/04/26

Note:- Box made with  $\frac{1}{2}$ " Ply wood (BWP, IS 710, fire-retardant/fire-roof). All out side surfaces are to be covered with rexin (approved colour).  
 All inside surfaces are to be covered with  $\frac{1}{4}$ " thk. PU foam.  
 Top cover & body must be attached with a chain.  
 Handle, Locking arrangement & hinge must be made of Stainless Steel materials.



 NATIONAL COUNCIL OF SCIENCE MUSEUMS			
TARAMANDAL PACKING BOX-03			
DRG. NO.	DATE	SCALE	TOLERANCE
TR-1/P-04	06-04-2026	0 : 00	± 0.10mm
TITLE:- BOX FOR FAN			
All Dimensions are in millimeters			
DRN. BY	CID. & APPRD. BY		
MINAKISHI DUTTA	PRAVEEN CHANDAKAR		

*Handwritten signature and date:*  
 08/04/26