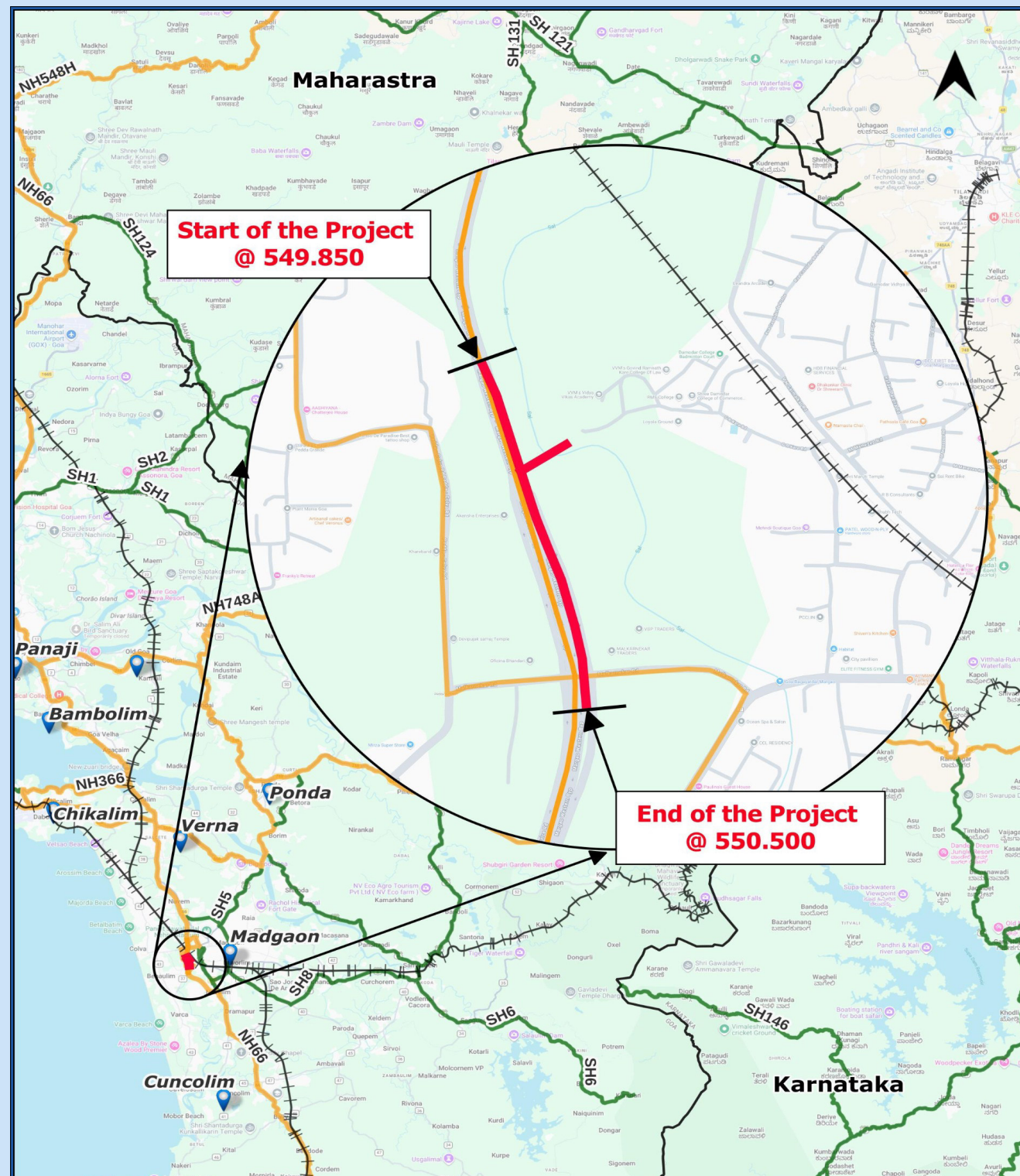


# GOVERNMENT OF GOA

## PUBLIC WORKS DEPARTMENT (NATIONAL HIGHWAYS)

**Construction of service road and improvement of Khareband junction with road safety measures from Km 550.020 to Km 550.530 on Margao bypass section of NH-66.**



## HIGHWAY DRAWINGS

Consultant



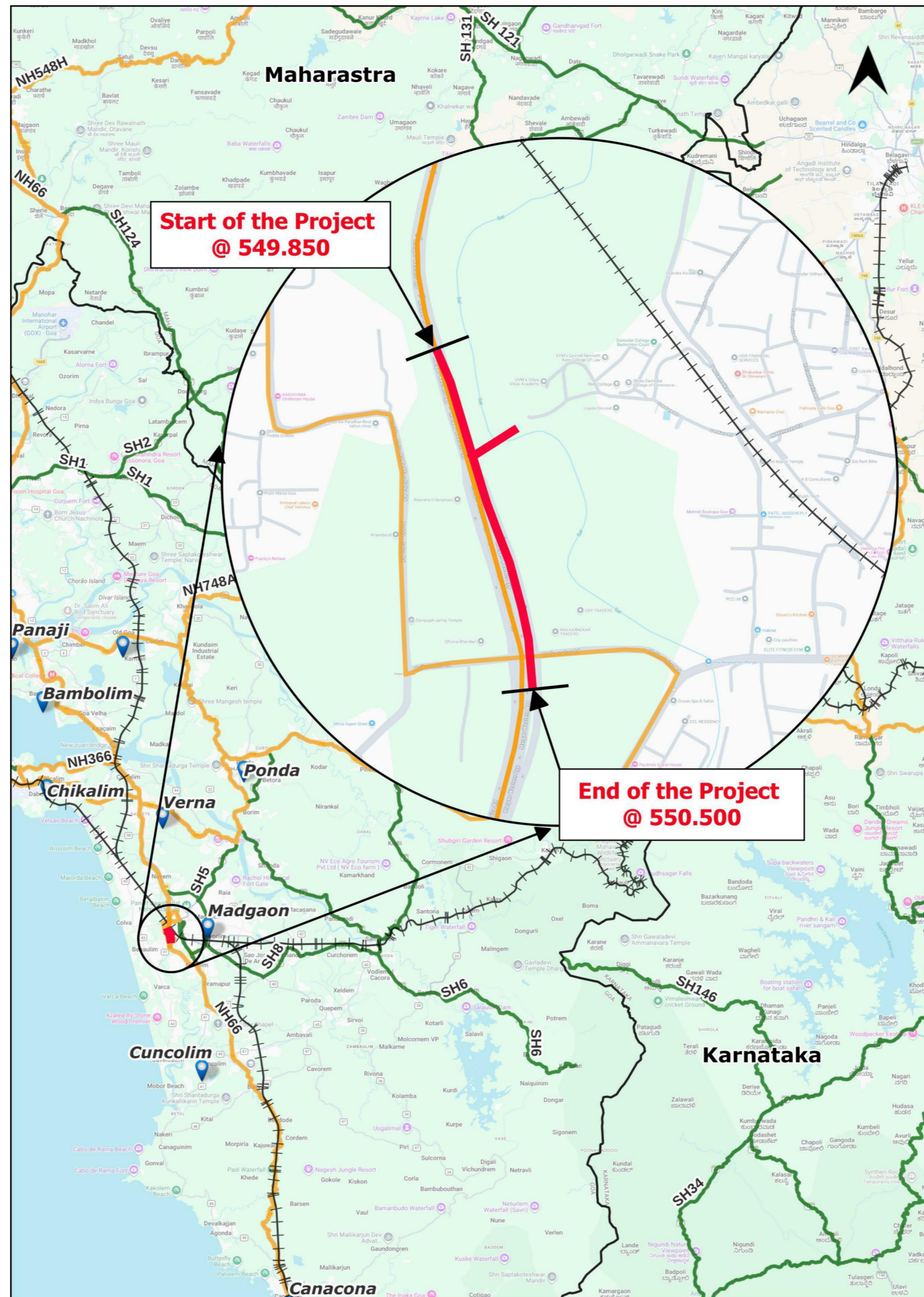
aarvee engineering consultants limited

8-2-5, Ravula Residency, Srinagar Colony Main Road, Hyderabad-82, Telangana, India.

Tel: +91-40-4848 3456, 2373 7633; Fax: +91-40-23736277

e-mail: aarvee@aarvee.net; web: www.aarvee.com

# INDEX MAP



DESIGNED BY	DRAWN BY	CHECKED BY	APPROVED BY	DATE
G.KRISHNA	P.SATISH	P.SRINIVAS RAO	S.S.REDDY	FEB-2026
REVISION NO	DATE	DESCRIPTION	REVISED BY	
R1	FEB-2026	DRAFT FEASIBILITY REPORT		
R0	JAN-2026	INITIAL SUBMISSION		

NOT TO SCALE

SCALES SHOWN ARE FOR AN A2 SIZE ORIGINAL DRAWING

CONSULTANT :

**aarvee**

aarvee engineering consultants limited

Ravula Residency, Srinagar Colony Main Rd., Hyderabad-82, India  
 Tel: +91-40-23737633; Fax: +91-40-23736277  
 e-mail: aarvee@aarvee.net; web: www.aarvee.com



PROJECT :

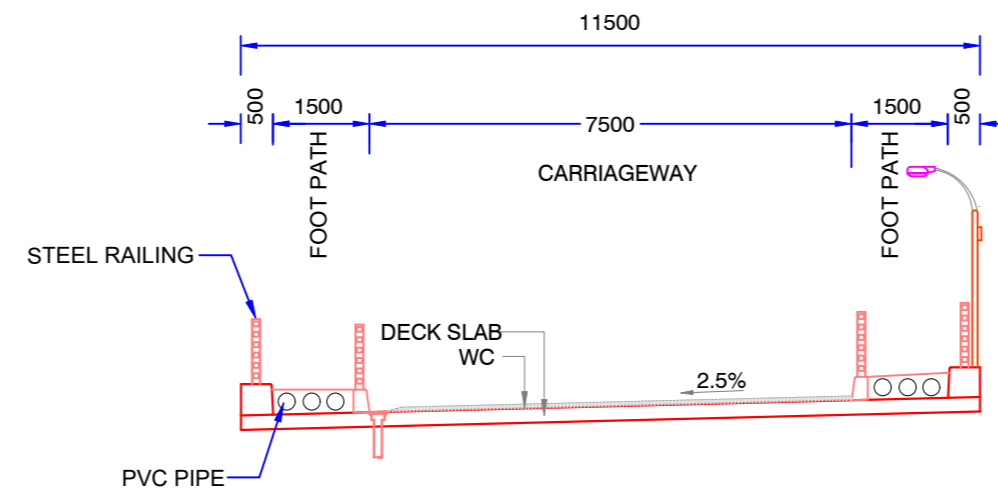
CONSTRUCTION OF SERVICE ROAD AND IMPROVEMENT OF KHAREBAND JUNCTION WITH ROAD SAFETY MEASURES FROM Km 549.850 TO Km 550.500 ON MARGAO WESTERN BYPASS SECTION OF NH-66 IN THE STATE OF GOA.

TITLE :

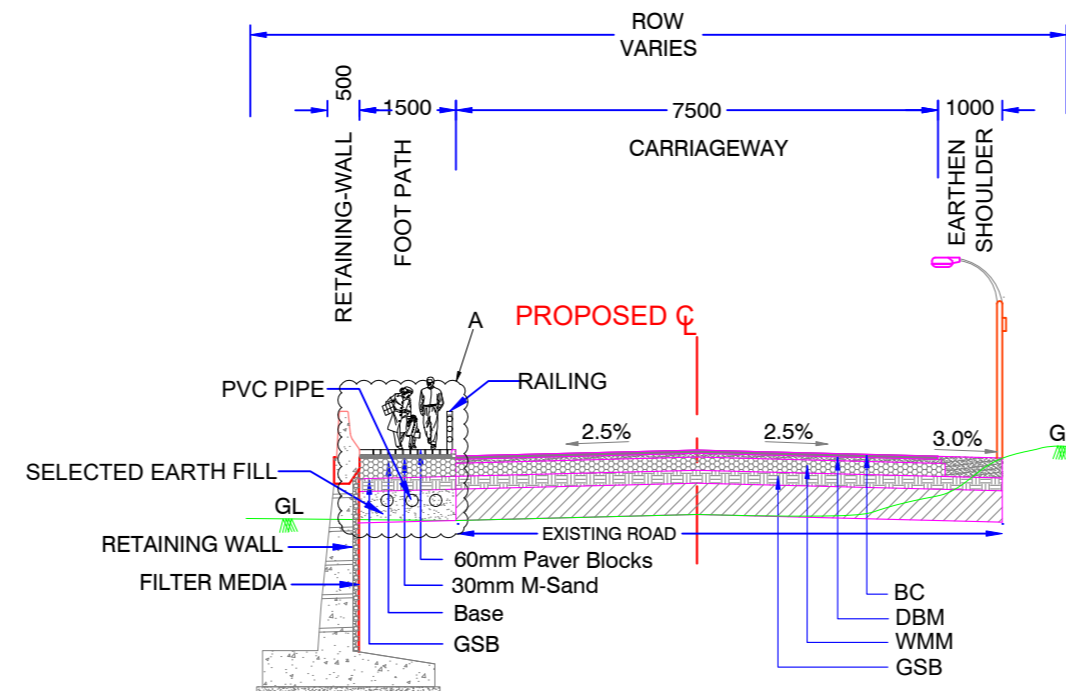
INDEX MAP

DRG. NO. NH-66 / GOA / INDEX MAP

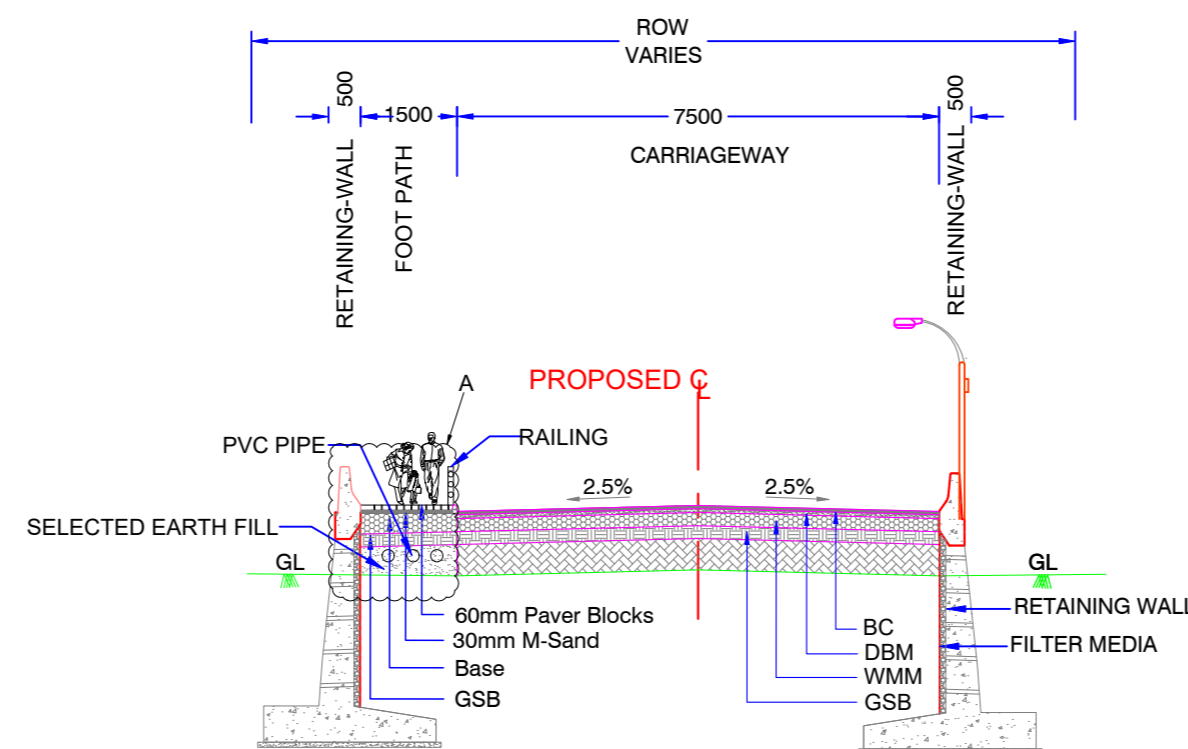
# TYPICAL CROSS SECTIONS



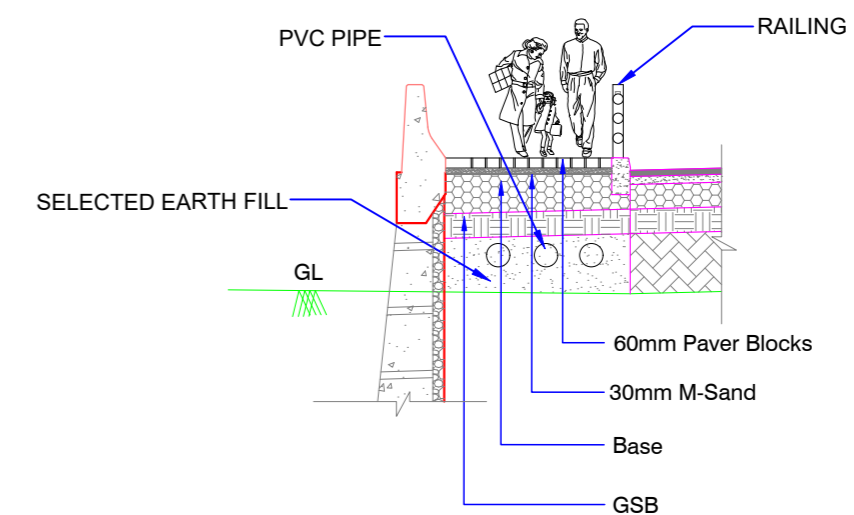
**TCS I(A): TYPICAL CROSS SECTION FOR 2 LANE MINOR BRIDGE WITH FOOTPATH ON BOTH SIDES**



**TCS I(B) : 2-LANE ROAD (LHS RETAINING WALL)**



**TCS I(C) : 2-LANE ROAD (BOTH SIDES RETAINING WALL)**



**DETAIL 'A'**

**NOTE :**  
ALL DIMENSIONS ARE IN MM

DESIGNED BY G.KRISHNA	DRAWN BY P.SATISH	CHECKED BY P.SRINIVASA RAO	APPROVED BY S.S.REDDY	DATE MAR - 2026
REVISION NO.	DATE	DESCRIPTION	REVISED BY	
R2	MAR - 2026	DPR SUBMISSION	-	
R1	FEB - 2026	DRAFT FEASIBILITY REPORT	-	
R0	JAN - 2026	INITIAL SUBMISSION	-	

NOT TO SCALE

SCALES SHOWN ARE FOR AN A2 SIZE ORIGINAL DRAWING

CLIENT :



CONSULTANT :

**aarvee**

aarvee engineering consultants limited  
Ravula Residency, Srinagar Colony Main Rd., Hyderabad-82, India  
Tel: +91-40-23737633; Fax: +91-40-23736277  
e-mail: aarvee@aarvee.net; web: www.aarvee.com

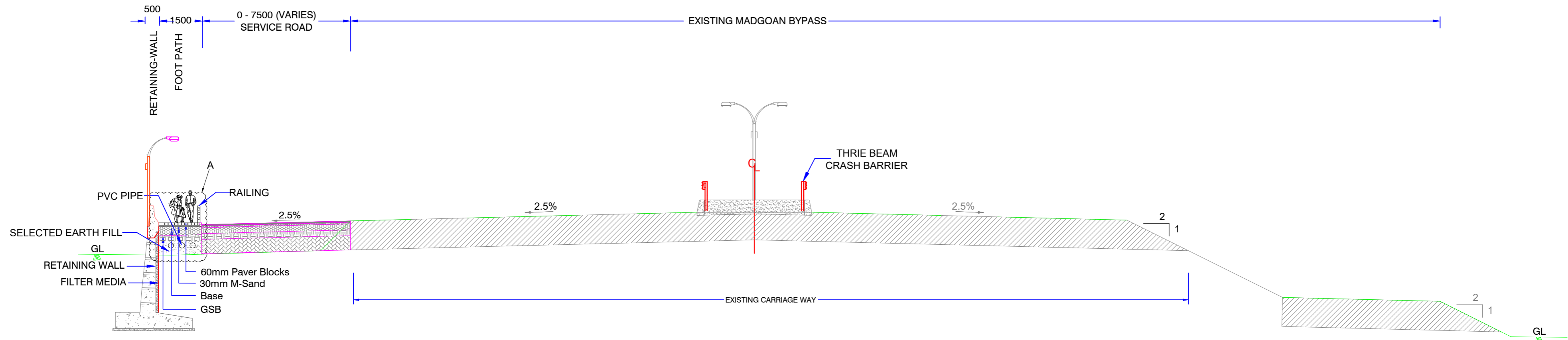
PROJECT :

CONSTRUCTION OF SERVICE ROAD AND IMPROVEMENT OF KHAREBAND JUNCTION WITH ROAD SAFETY MEASURES FROM Km 549.850 TO Km 550.500 ON MARGAO WESTERN BYPASS SECTION OF NH-66 IN THE STATE OF GOA.

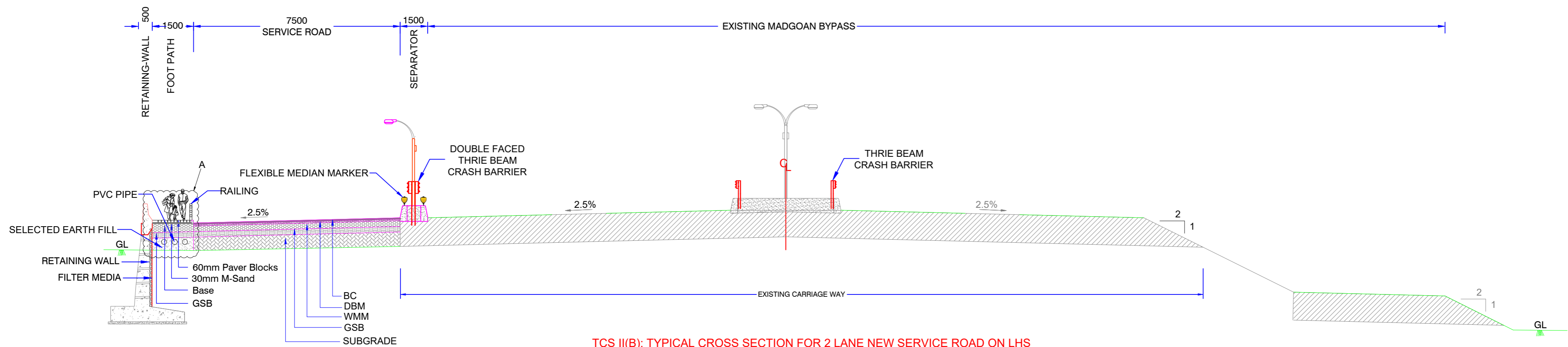
TITLE :

TYPICAL CROSS SECTION

DRG. NO. 2667 / GOA / NH-66 / TCS / 01



TCS II(A): TYPICAL CROSS SECTION FOR 2 LANE NEW SERVICE ROAD ON LHS (DECELERATION)



TCS II(B): TYPICAL CROSS SECTION FOR 2 LANE NEW SERVICE ROAD ON LHS

NOTE :  
ALL DIMENSIONS ARE IN MM

DESIGNED BY  G. KRISHNA	DRAWN BY  P. SATISH	CHECKED BY  P. SRINIVASA RAO	APPROVED BY  S. S. REDDY	DATE MAR - 2026
REVISION NO.	DATE	DESCRIPTION	REVISED BY	
R2	MAR - 2026	DPR SUBMISSION	-	
R1	FEB - 2026	DRAFT FEASIBILITY REPORT	-	
R0	JAN - 2026	INITIAL SUBMISSION	-	

NOT TO SCALE

SCALES SHOWN ARE FOR AN A2 SIZE ORIGINAL DRAWING



CONSULTANT :

**aarvee**  
aarvee engineering consultants limited  
Ravula Residency, Srinagar Colony Main Rd., Hyderabad-82, India  
Tel: +91-40-23737633; Fax: +91-40-23736277  
e-mail: aarvee@aarvee.net; web: www.aarvee.com

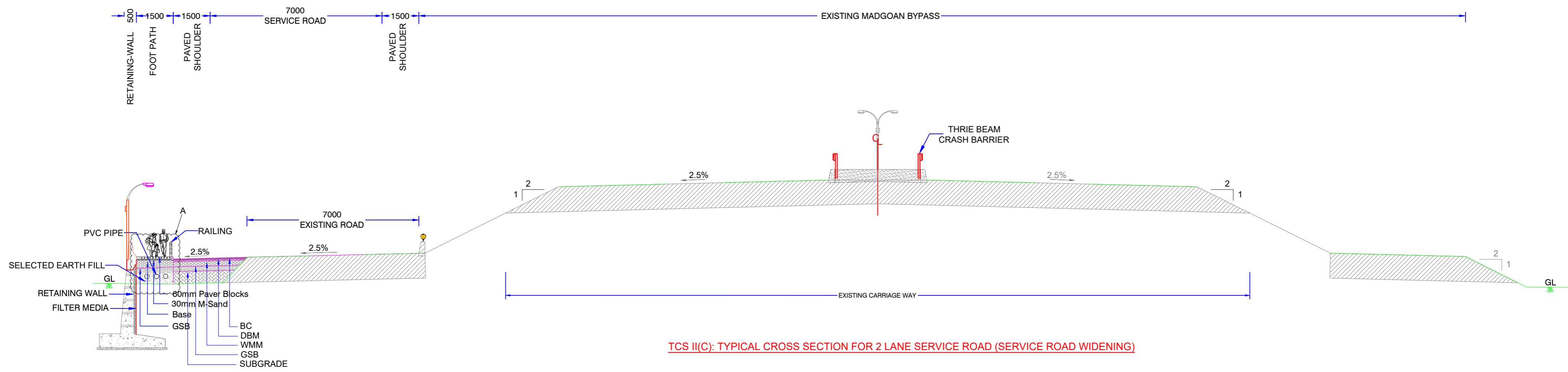
PROJECT :

CONSTRUCTION OF SERVICE ROAD AND IMPROVEMENT OF KHAREBAND JUNCTION WITH ROAD SAFETY MEASURES FROM Km 549.850 TO Km 550.500 ON MARGAO WESTERN BYPASS SECTION OF NH-66 IN THE STATE OF GOA.

TITLE :

TYPICAL CROSS SECTION

DRG. NO. 2667 / GOA / NH-66 / TCS / 02



**NOTE :**  
ALL DIMENSIONS ARE IN MM

DESIGNED BY  G. KRISHNA	DRAWN BY  P. SATISH	CHECKED BY  P. SRINIVASA RAO	APPROVED BY  S. S. REDDY	DATE MAR - 2026
REVISION NO.	DATE	DESCRIPTION	REVISED BY	
R2	MAR - 2026	DPR SUBMISSION	-	
R1	FEB - 2026	DRAFT FEASIBILITY REPORT	-	
R0	JAN - 2026	INITIAL SUBMISSION	-	

NOT TO SCALE

SCALES SHOWN ARE FOR AN A2 SIZE ORIGINAL DRAWING



CONSULTANT :

**aarvee**  
aarvee engineering consultants limited  
Ravula Residency, Srinagar Colony Main Rd., Hyderabad-82, India  
Tel: +91-40-23737633; Fax: +91-40-23736277  
e-mail: aarvee@aarvee.net; web: www.aarvee.com

PROJECT :

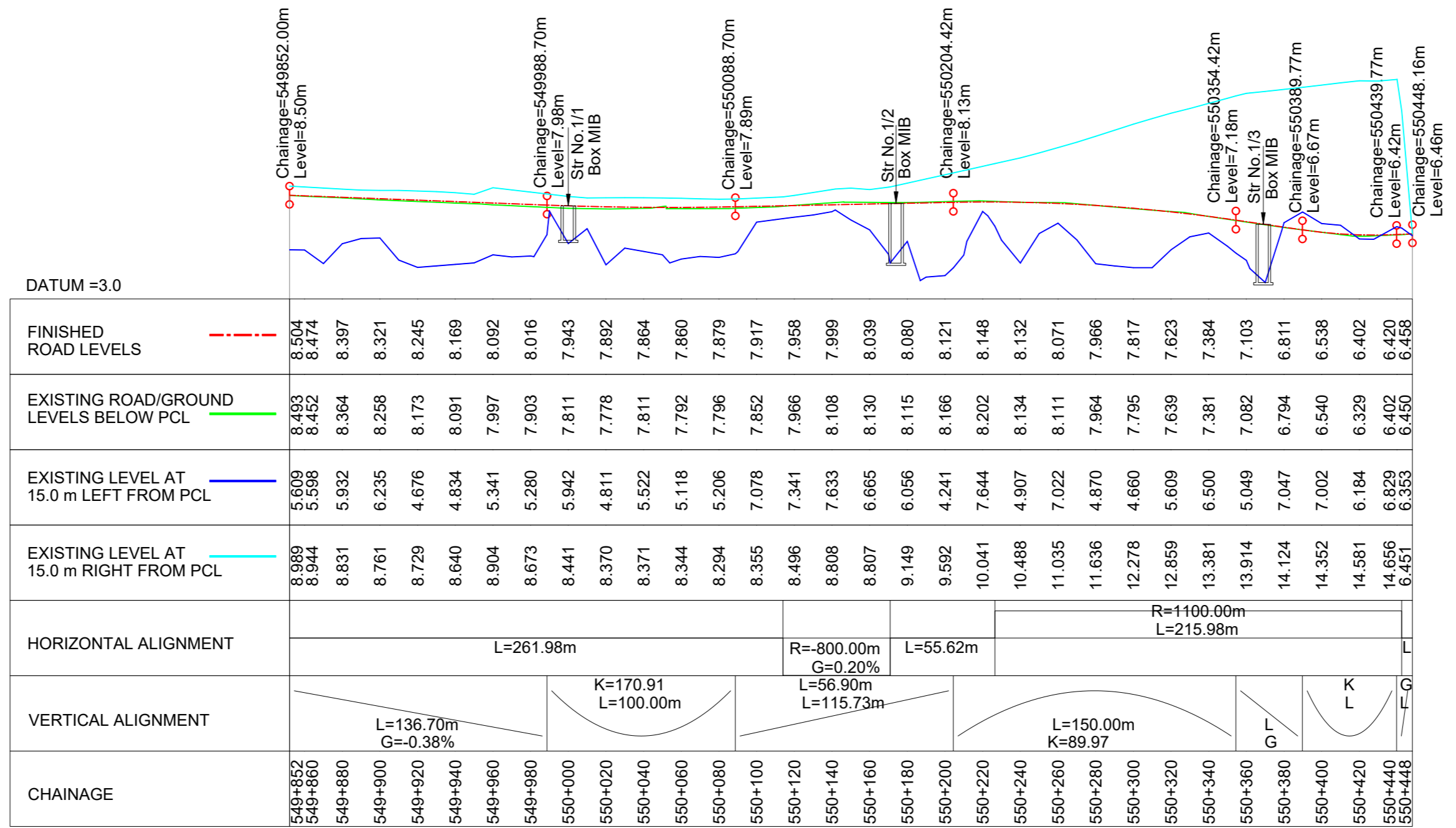
**CONSTRUCTION OF SERVICE ROAD AND IMPROVEMENT OF KHAREBAND JUNCTION WITH ROAD SAFETY MEASURES FROM Km 549.850 TO Km 550.500 ON MARGAO WESTERN BYPASS SECTION OF NH-66 IN THE STATE OF GOA.**

TITLE :

**TYPICAL CROSS SECTION**

DRG. NO. 2667 / GOA / NH-66 / TCS / 03

# PLAN & PROFILE OF MAIN CARRIAGEWAY



DESIGNED BY G. KRISHNA	DRAWN BY M. MOHAN	CHECKED BY P. SRINIVASA RAO	APPROVED BY S. S. REDDY	DATE MAR - 2026
REVISION NO.	DATE	DESCRIPTION	REVISED BY	
R2	MAR - 2026	DPR SUBMISSION	-	
R1	FEB - 2026	DRAFT FEASIBILITY REPORT	-	
R0	JAN - 2026	INITIAL SUBMISSION	-	

**LEGEND:**

- Proposed CL
- Carriageway
- Median
- Shoulder
- Culvert/Bridge
- Foot path

**SCALE :**

Horizontal 1:2500  
Vertical 1:250

SCALES SHOWN ARE FOR AN A2 SIZE ORIGINAL DRAWING

**CLIENT :**

**CONSULTANT :**

aarvee engineering consultants limited  
Ravula Residency, Srinagar Colony Main Rd., Hyderabad-82, India  
Tel: +91-40-23737633; Fax: +91-40-23736277  
e-mail: aarvee@aarvee.net; web: www.aarvee.com

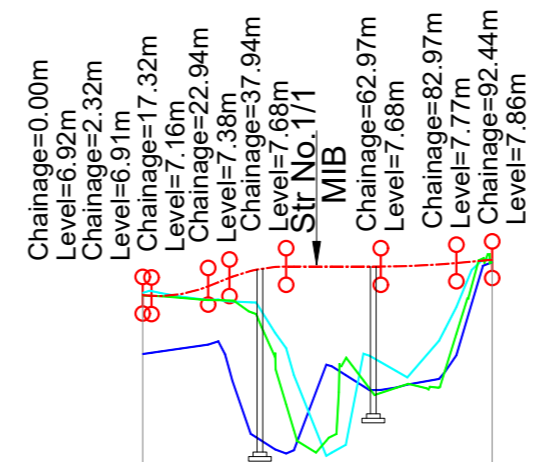
**PROJECT :**

CONSTRUCTION OF SERVICE ROAD AND IMPROVEMENT OF KHAREBAND JUNCTION WITH ROAD SAFETY MEASURES FROM Km 549.850 TO Km 550.500 ON MARGAO WESTERN BYPASS SECTION OF NH-66 IN THE STATE OF GOA.

**TITLE :**

PLAN & PROFILE (NH)  
From Km 549.850 to Km 550.448

DRG. NO. AA / 2667 / HIG / MCW / PP / 01



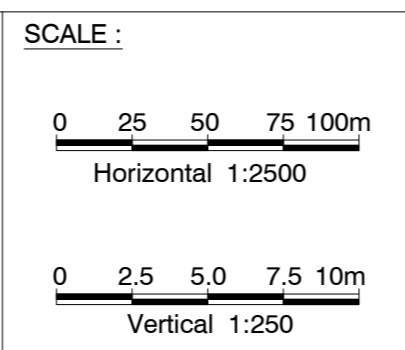
DATUM =2.0

FINISHED ROAD LEVELS	6.920	7.263	7.680	7.680	7.747	7.859
EXISTING ROAD/GROUND LEVELS BELOW PCL	6.915	6.790	3.347	4.454	4.938	7.792
EXISTING LEVEL AT 15.0 m LEFT FROM PCL	5.364	5.700	2.820	4.409	4.899	7.795
EXISTING LEVEL AT 15.0 m RIGHT FROM PCL	6.982	6.808	4.805	5.320	6.029	7.860
HORIZONTAL ALIGNMENT	L=92.44m G=3.99% L=20 L=5.62 K=21.72					
VERTICAL ALIGNMENT	G=-0.64% L=15 L=2.33 K=3.76 L=15 G=0.0% K=3.24 25.03 G=-0.64% L=0.92%					
CHAINAGE	0	20	40	60	80	92

DESIGNED BY  G.KRISHNA	DRAWN BY  M.MOHAN	CHECKED BY  P.SRINIVASA RAO	APPROVED BY  S.S.REDDY	DATE MAR - 2026
REVISION NO.	DATE	DESCRIPTION	REVISED BY	
R2	MAR - 2026	DPR SUBMISSION	-	
R1	FEB - 2026	DRAFT FEASIBILITY REPORT	-	
R0	JAN - 2026	INITIAL SUBMISSION	-	

LEGEND:

Proposed CL	
Carriageway	
Median	
Shoulder	
Culvert/Bridge	
Foot path	



CONSULTANT :

aarvee engineering consultants limited  
Ravula Residency, Srinagar Colony Main Rd., Hyderabad-82, India  
Tel: +91-40-23737633; Fax: +91-40-23736277  
e-mail: aarvee@aarvee.net; web: www.aarvee.com

PROJECT :

CONSTRUCTION OF SERVICE ROAD AND IMPROVEMENT OF KHAREBAND JUNCTION WITH ROAD SAFETY MEASURES FROM Km 549.850 TO Km 550.500 ON MARGAO WESTERN BYPASS SECTION OF NH-66 IN THE STATE OF GOA.

TITLE :

PLAN & PROFILE (CROSS ROAD)  
From Km 0.000 to Km 92.000

DRG. NO. AA / 2667 / HIG / MCW / PP / 02

# SIGNAGE PLAN



DESIGNED BY  G. KRISHNA	DRAWN BY  P. SATISH	CHECKED BY  P. SRINIVASA RAO	APPROVED BY  S. S. REDDY	DATE MAR - 2026
REVISION NO	DATE	DESCRIPTION	REVISED BY	
R2	MAR - 2026	DPR SUBMISSION	-	
R1	FEB - 2026	DRAFT FEASIBILITY REPORT	-	
R0	JAN - 2026	INITIAL SUBMISSION	-	

**LEGEND:**

- Proposed CL:
- Proposed CW:
- Proposed ROW:
- Culvert / Bridge:
- Existing Road:
- Proposed Carriageway:

**SCALE :**

Horizontal 1:2500  
Vertical 1:250

**CONSULTANT :**

**aarvee**  
aarvee engineering consultants limited  
Ravula Residency, Srinagar Colony Main Rd., Hyderabad-82, India  
Tel: +91-40-23737633; Fax: +91-40-23736277  
e-mail: aarvee@aarvee.net; web: www.aarvee.com

**CLIENT :**

GOVERNMENT OF GOA

**PROJECT :**

CONSTRUCTION OF SERVICE ROAD AND IMPROVEMENT OF KHAREBAND JUNCTION WITH ROAD SAFETY MEASURES FROM Km 549.850 TO Km 550.500 ON MARGAO WESTERN BYPASS SECTION OF NH-66 IN THE STATE OF GOA.

**TITLE :**

SIGNAGE PLAN

DRG. NO. 2667 / GOA / NH- 66 / SP / 01

# JUNCTION DRAWINGS



DESIGNED BY  G.KRISHNA	DRAWN BY  P.SATISH	CHECKED BY  P.SRINIVASA RAO	APPROVED BY  S.S.REDDY	DATE JAN-2026
REVISION NO.	DATE	DESCRIPTION	REVISED BY	
R2	MAR - 2026	DPR SUBMISSION	-	
R1	FEB - 2026	DRAFT FEASIBILITY REPORT	-	
R0	JAN - 2026	INITIAL SUBMISSION	-	

**LEGEND:**

Proposed CL	
Proposed CW	
Proposed ROW	
Culvert / Bridge	
Existing Road	
Proposed Carriageway	

**SCALE :**

Horizontal 1:2500  
Vertical 1:250

SCALES SHOWN ARE FOR AN A2 SIZE ORIGINAL DRAWING



**CONSULTANT :**

**aarvee engineering consultants limited**  
Ravula Residency, Srinagar Colony Main Rd., Hyderabad-82, India  
Tel: +91-40-23737633; Fax: +91-40-23736277  
e-mail: aarvee@aarvee.net; web: www.aarvee.com

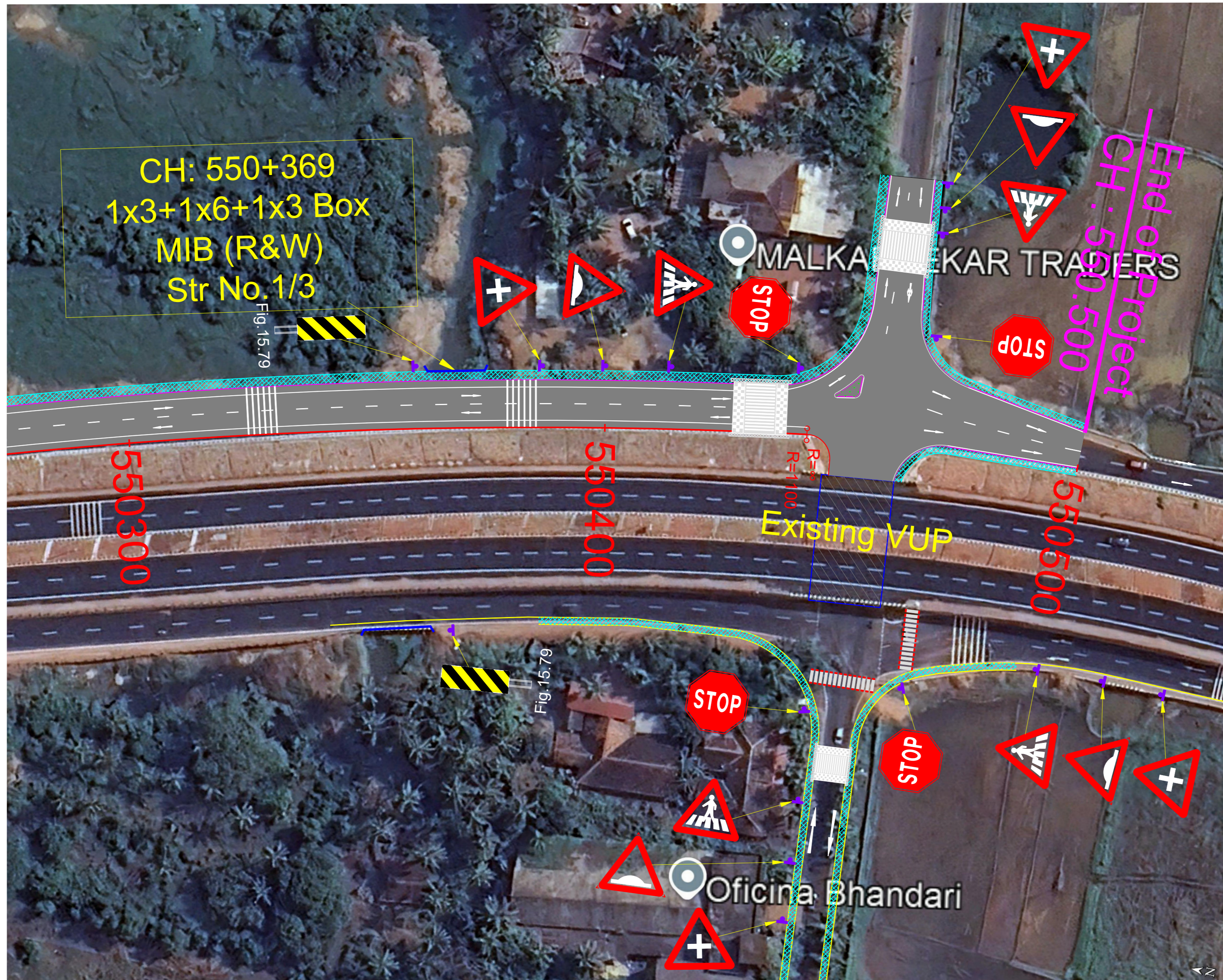
**PROJECT :**

CONSTRUCTION OF SERVICE ROAD AND IMPROVEMENT OF KHAREBAND JUNCTION WITH ROAD SAFETY MEASURES FROM Km 549.850 TO Km 550.500 ON MARGAO WESTERN BYPASS SECTION OF NH-66 IN THE STATE OF GOA.

**TITLE :**

T - JUNCTION AT Km. 550.054

DRG. NO. AA / 2667 / HIG / MCW / JUN / 01



DESIGNED BY  G.KRISHNA	DRAWN BY  P.SATISH	CHECKED BY  P.SRINIVASA RAO	APPROVED BY  S.S.REDDY	DATE JAN-2026
REVISION NO.	DATE	DESCRIPTION	REVISED BY	
R2	MAR - 2026	DPR SUBMISSION	-	
R1	FEB - 2026	DRAFT FEASIBILITY REPORT	-	
R0	JAN - 2026	INITIAL SUBMISSION	-	

**LEGEND:**

Proposed CL	
Proposed CW	
Proposed ROW	
Culvert / Bridge	
Existing Road	
Proposed Carriageway	

**SCALE :**

Horizontal 1:2500  
0 25 50 75 100m

Vertical 1:250  
0 2.5 5.0 7.5 10m

SCALES SHOWN ARE FOR AN A2 SIZE ORIGINAL DRAWING



CONSULTANT :

**aarvee**  
aarvee engineering consultants limited  
Ravula Residency, Srinagar Colony Main Rd., Hyderabad-82, India  
Tel: +91-40-23737633; Fax: +91-40-23736277  
e-mail: aarvee@aarvee.net; web: www.aarvee.com

PROJECT :

CONSTRUCTION OF SERVICE ROAD AND IMPROVEMENT OF KHAREBAND JUNCTION WITH ROAD SAFETY MEASURES FROM Km 549.850 TO Km 550.500 ON MARGAO WESTERN BYPASS SECTION OF NH-66 IN THE STATE OF GOA.

TITLE :  
+ - JUNCTION AT Km. 550.458

DRG. NO. AA / 2667 / HIG / MCW / JUN / 01